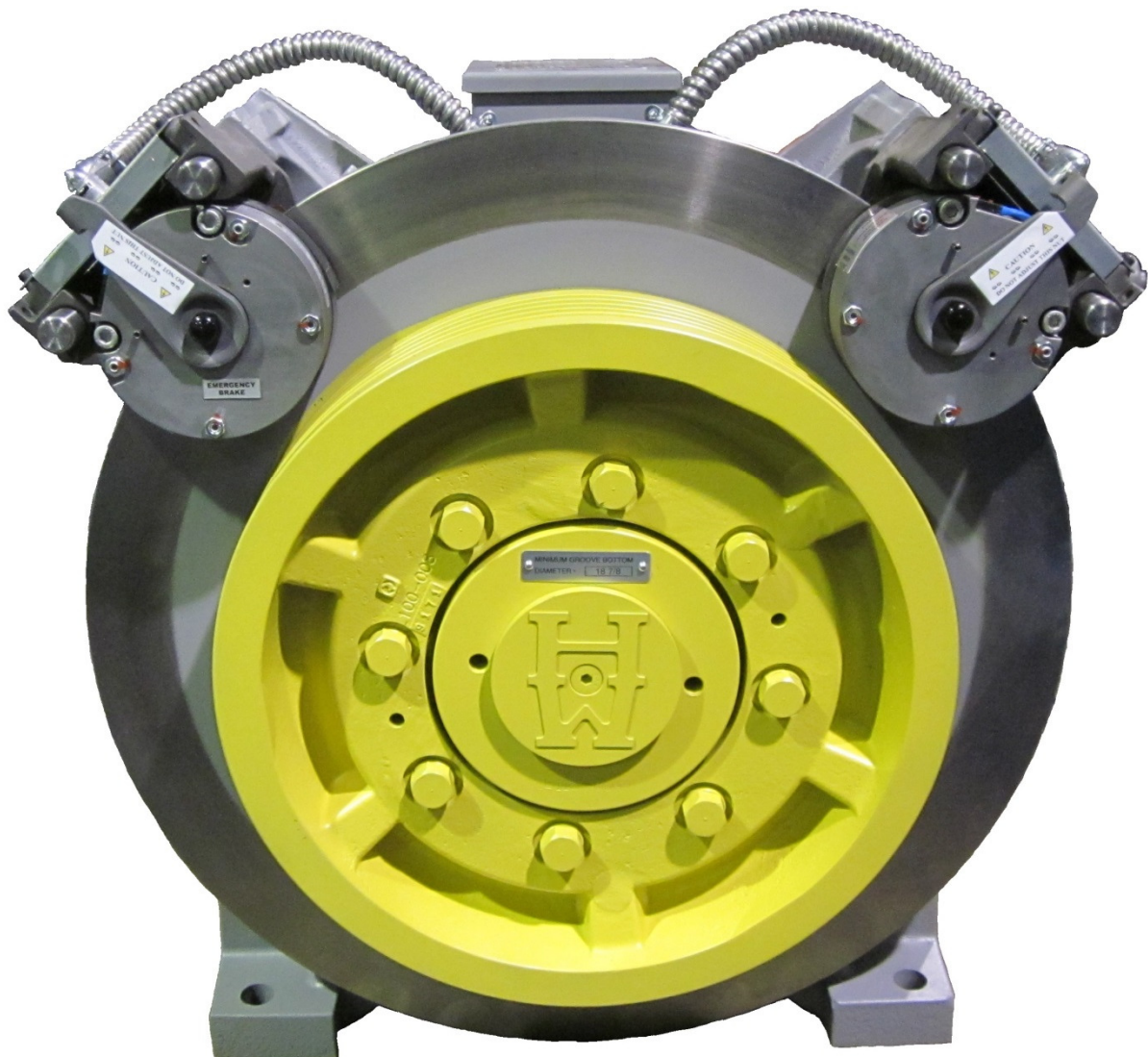
	Document Name	Date	Rev.	Page	Bulletin
	PRINT & PARTS LIST SUPPLEMENT	6/27/17	A	1 of 20	1146S

Hollister-Whitney Elevator Corporation

PRINT & PARTS LIST SUPPLEMENT GL100, GL115, GL130 and GL170 AC Permanent Magnet, Gearless Machines Without Outboard Stand

See also Bulletin 1146: Installation and Service Manual, at:

<http://www.hollisterwhitney.com/#tech-support>




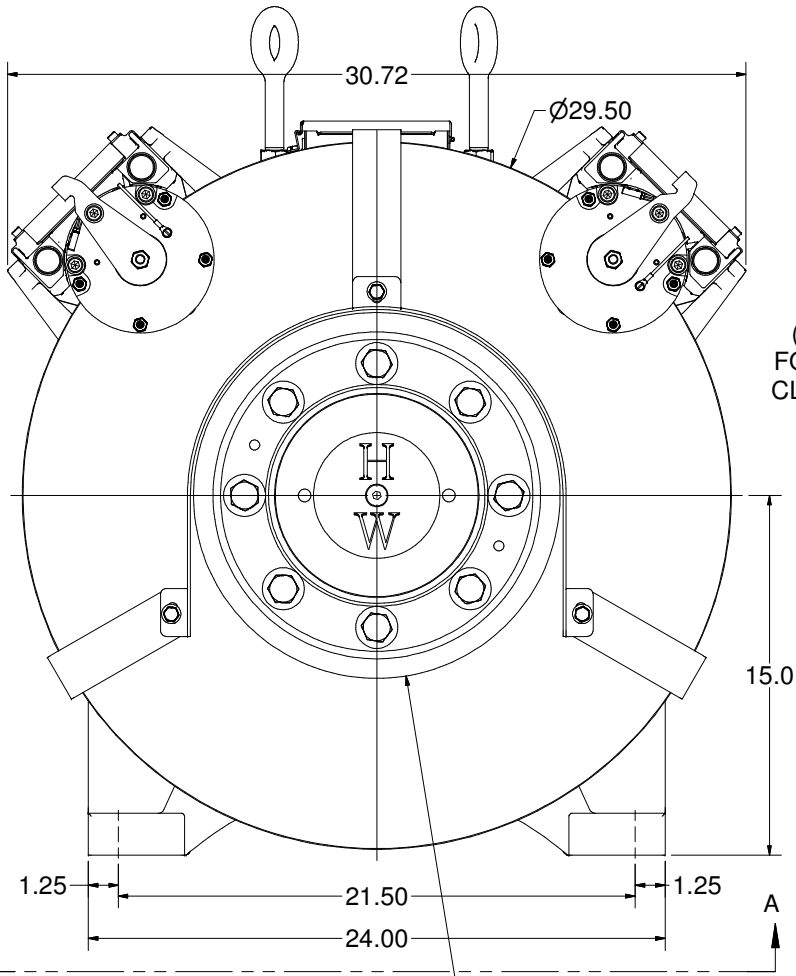
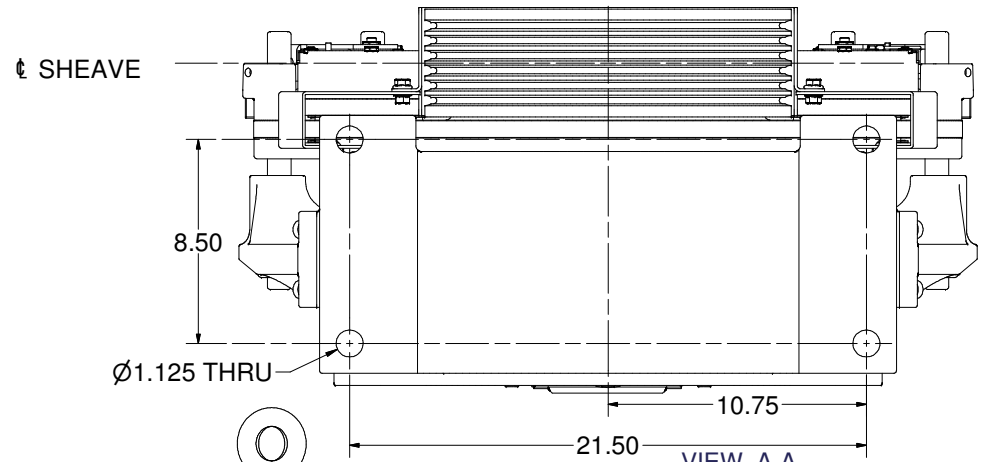
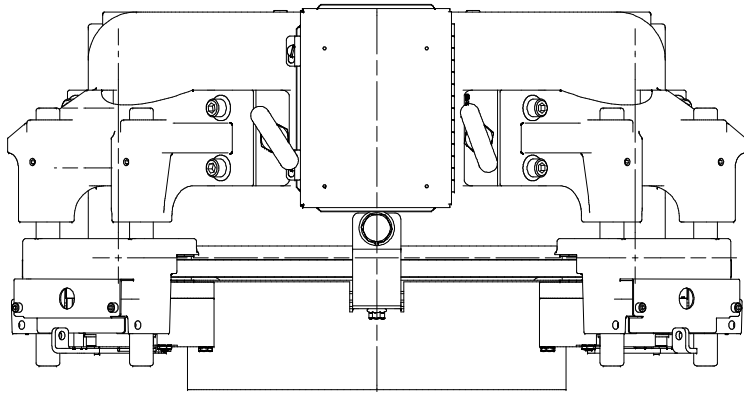
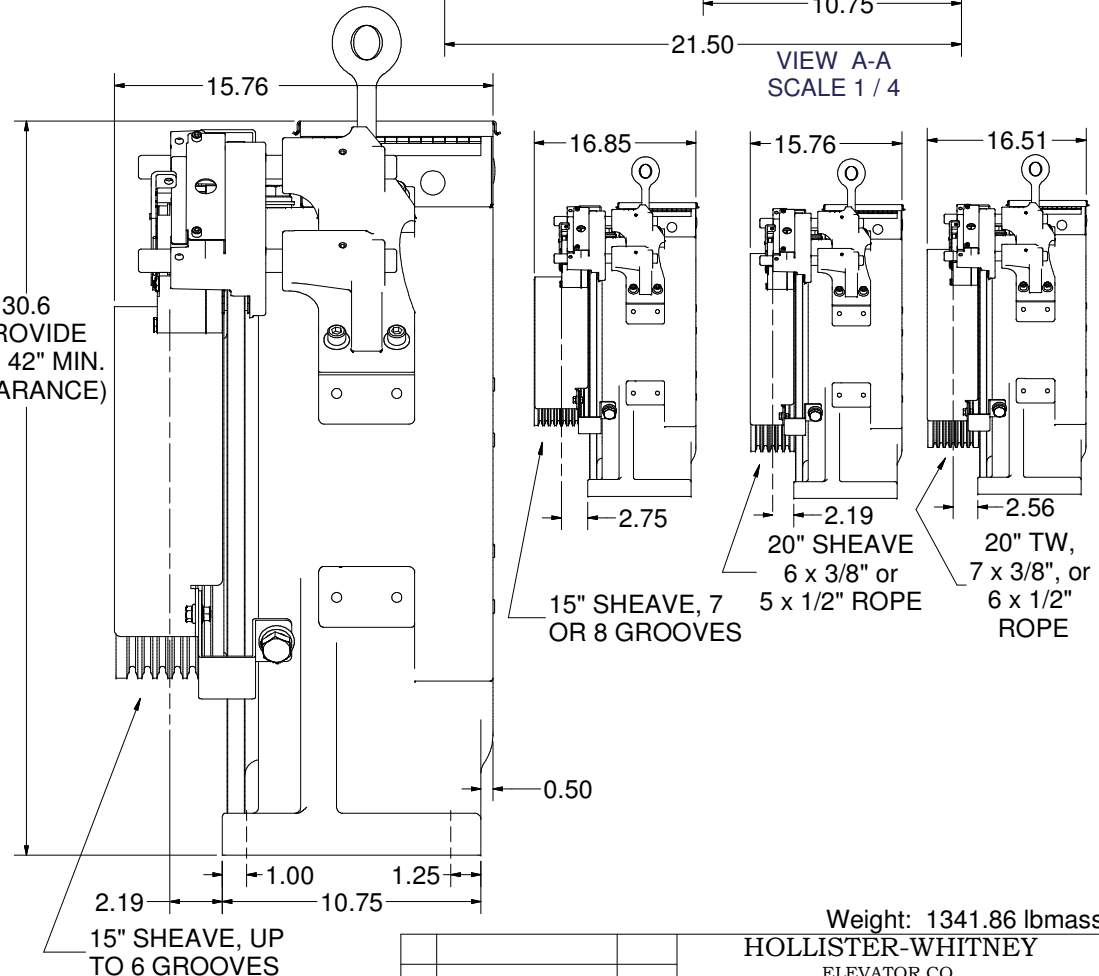
	Document Name	Date	Rev.	Page	Bulletin
	PRINT & PARTS LIST SUPPLEMENT	6/27/17	A	2 of 20	1146S

Table of Contents

- **MACHINES - 2:1**
 - **GL100** 3000 lbs 15" Wheel, 2250 lbs 20" Wheel
 - **GL115** 3500 lbs 15" Wheel, 2625 lbs 20" Wheel
 - **GL130** 4000 lbs 15" Wheel, 3000 lbs 20" Wheel
 - **GL17 0** 5000 lbs 15" Wheel, 3750 lbs 20" Wheel
- **WHEEL GUARDS**
 - **GL100-176** Narrow 15" Wheel
 - **GL100-176-1** Narrow 20" Wheel
 - **GL100-177** Wide 15" Wheel
 - **GL100-177-1** Wide 20" Wheel
- **ENCODER RELOCATION KIT**
 - **GL100-018-EBA**
- **ELECTICAL BOX - RELOCATION KITS**
 - **GL100RK- 159** Side Mount Location
 - **GL100RK-159F** Front Mount Location
- **BASEMENT SET MACHINE STAND**
 - **GL100-204BS**



30.6
(PROVIDE FOR 42" MIN. CLEARANCE)



Weight: 1341.86 lbmass

HOLLISTER-WHITNEY
ELEVATOR CO.

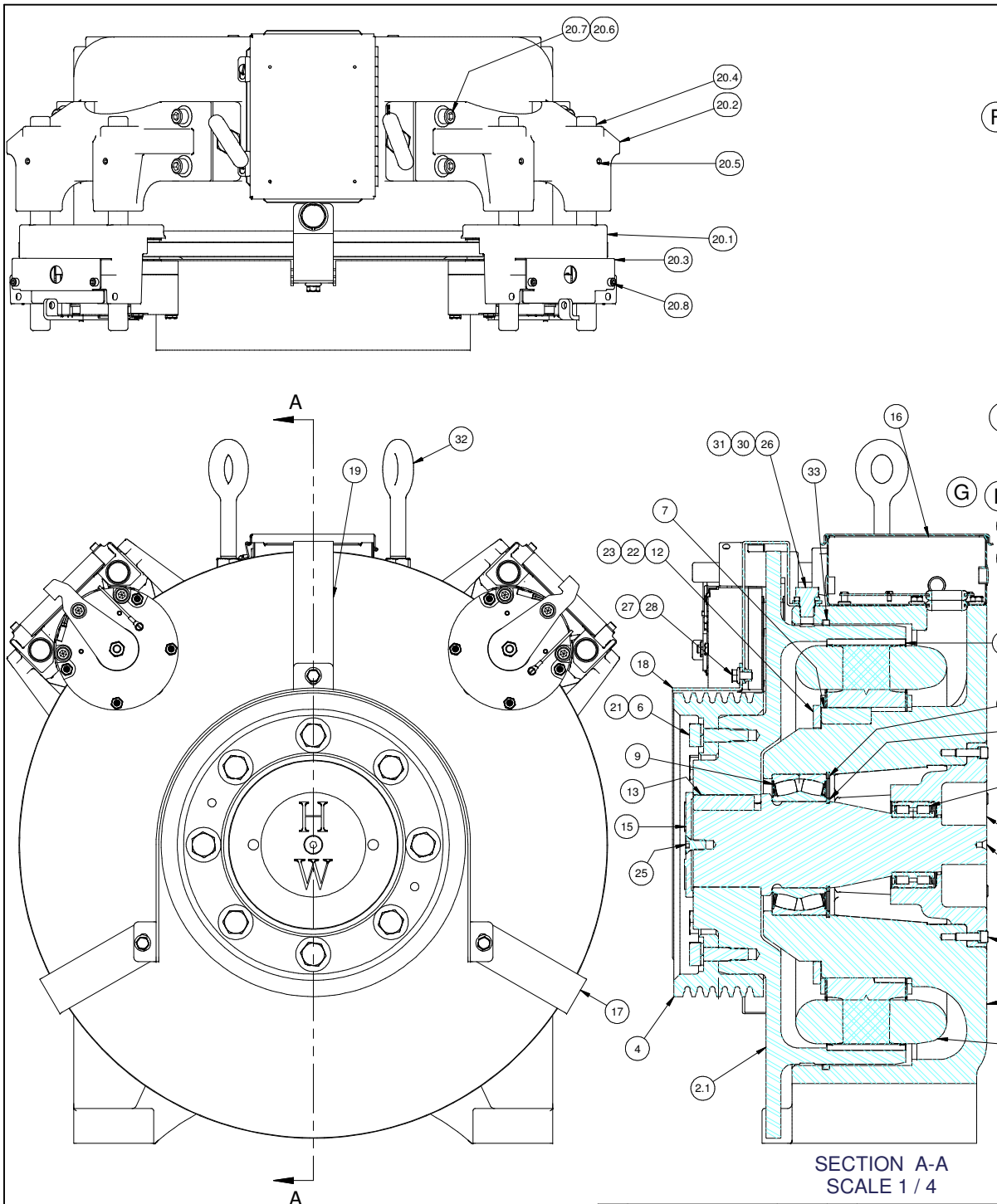
TITLE GEARLESS MACHINE, Max Cap. (15" TW, 3000# 2:1, 1500# 1:1) (20" TW, 2250# 2:1, 1125# 1:1)

DRAWN BY LTL
 SCALE 1:4
 MATERIAL SEE PARTS LIST
 DIMENSIONAL TOL:
 1 PLACE ±0.01 2 PLACE ±0.005
 3 & 4 PLACE ±0.001 ANGLES ±0.1°
 REF - OPEN (NOMINAL) READING

SEE OTHER SIDE FOR PRINT REVISIONS

SHEET C
 DATE 1/6/2009
GL100

Ø15.25 STANDARD
(15.00 P.D.)



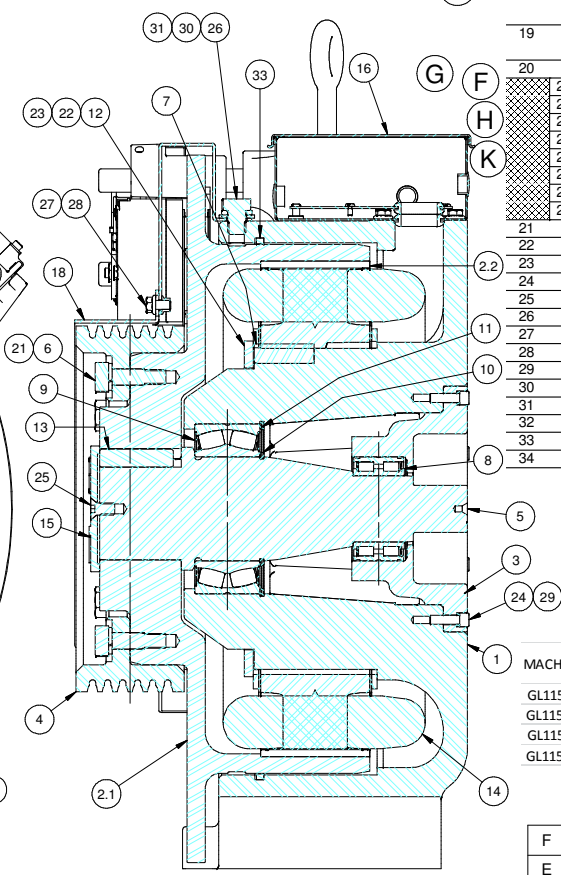
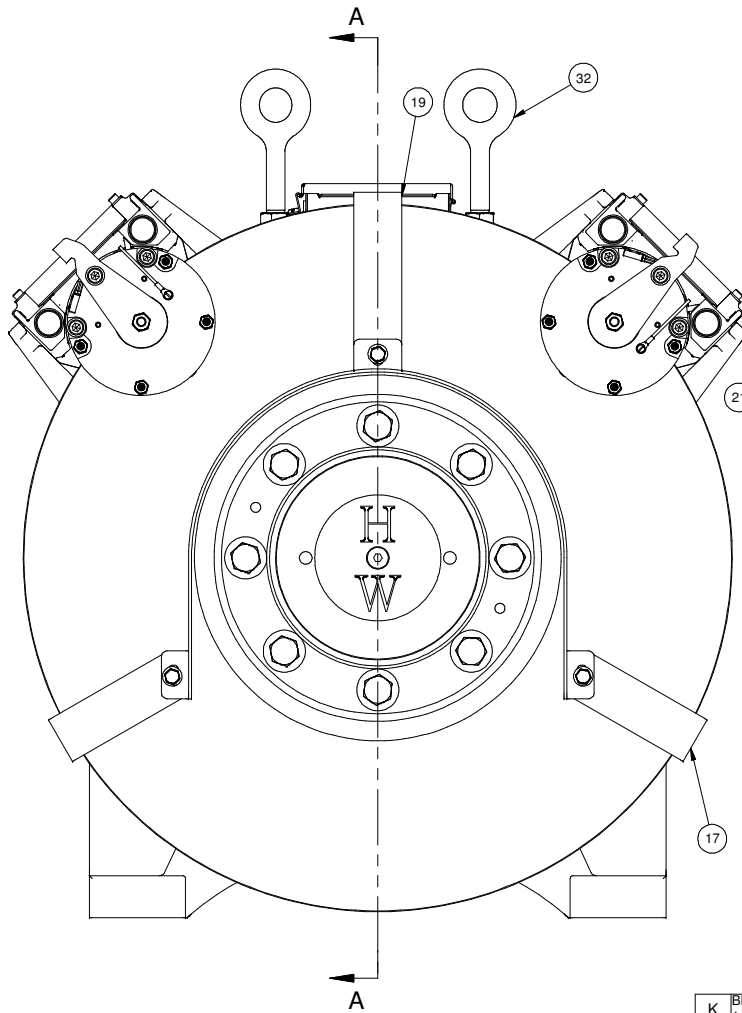
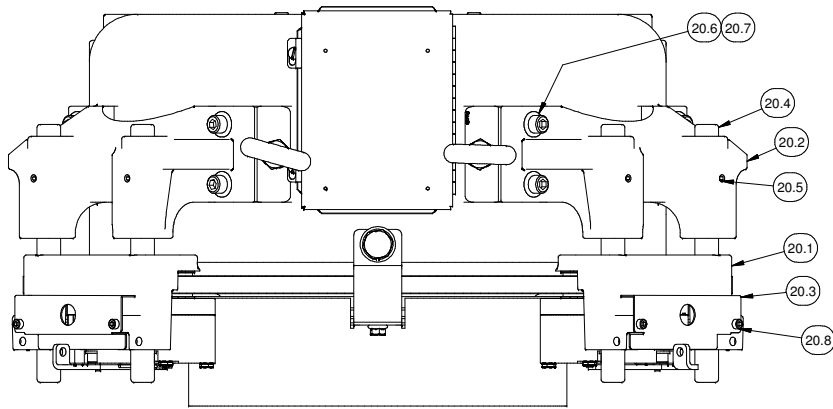
ITEM	QTY	PART #	DESCRIPTION
1	1	GL100-001	BASE HOUSING, MOTOR #GL100
2	1	GL100-002	ROTOR ASSEMBLY, MOTOR #GL100
2.1	1	GL100-004	ROTOR
2.2	28	GL100-099	PERMANENT MAGNET - MOTOR #GL100
3	1	GL100-005	BEARING CAP
4	1	GL100-007	TRACTION SHEAVE, 15" (up to 6 Grooves)
		GL100-008	TRACTION SHEAVE, 20" (6 x 3/8", 5 x 1/2")
		GL100-009	TRACTION SHEAVE, 15" (7 or 8 Grooves)
		GL100-010	TRACTION SHEAVE, 20" (7 x 3/8", 6 x 1/2")
5	1	GL100-018	MAIN SHAFT
6	8	GL100-073	BODY BOLT
7	1	GL100-088	KEY - STATOR CORE TO BASE
8	1	GL100-089	BEARING, SEALED DBL ROW CYL. ROLLER
9	1	GL100-090	BEARING, SEALED SPHERICAL
10	1	GL100-092	RETAINING RING - SHAFT
11	1	GL100-093	RETAINING RING - HOUSING
12	1	GL100-094	CLAMP RING - STATOR ASSEMBLY
13	1	GL100-095	KEY - MAIN SHAFT TO ROTOR
14	1	GL100-170-150 GL100-360-150 GL100-170-200 GL100-360-200	WINDING ASSEMBLY (PRINT GL100-100)
15	1	GL100-104	CAP
16	1	GL100-159	ENCLOSURE
17	2	GL100-160 GL100-160-1 GL100-161	BRACKET #1 - 15" SHEAVE GUARD BRACKET #1 - 20" SHEAVE GUARD GUARD - 15" TRACTION SHEAVE (NARROW)
18	1	GL100-161-1 GL100-164 GL100-164-1 GL100-162	GUARD - 20" TRACTION SHEAVE (NARROW) GUARD - 15" TRACTION SHEAVE (WIDE) GUARD - 20" TRACTION SHEAVE (WIDE) BRACKET #2 - 15" SHEAVE GUARD
19	1	GL100-162-1 GL100-146	BRACKET #2 - 20" SHEAVE GUARD DISC BRAKE (MAYR #6) - MRL
20	2	GL100-146-115	MAYR BRAKE CALIPER #8211863 (104/52 Vdc)
20.1	2	142-001	BRAKE BASE
20.2	2	142-001	BRAKE BASE
20.3	2	146-003	ELECTRICAL COVER
20.4	4	142-012	BRAKE ROD
20.5	4	3/8-16 UNC x 0.375	SET SCREW
20.6	8	1/2 WASHER	STANDARD WASHER
20.7	8	1/2 - 13 UNC x 1.5	HEX HEAD CAP SCREW
20.8	4	M6 x 1.00 x 8 mm	SOCKET HEAD CAP SCREW
21	8	M18 LOCKWASHER - DIN 127B	HELICAL SPRING LOCK WASHER - BODY BOLT
22	6	3/8 WASHER	HELICAL SPRING LOCK WASHER
23	6	3/8-16 UNC - 1.00	SOCKET HEAD CAP SCREW
24	6	3/8 - 16 UNC - 1.25	SOCKET HEAD CAP SCREW
25	1	1/2 - 13 UNC x 1.0	FLAT HEAD MACHINE SCREW
26	3	3/4 - 10 UNC x 1.0	HEX HEAD CAP SCREW
27	3	3/8 UNC	WHIZ NUT
28	7	3/8-16 UNC x 0.625	WHIZ BOLT
29	6	3/8 WASHER	SHCS LOCK WASHER
30	3	3/4 WASHER	STANDARD WASHER
31	3	3/4 WASHER	STANDARD LOCK WASHER
32	2	GL100-163	EYEBOLT & NUT
33	1	GL100-165	FELT DUST SEAL
34	1	ENC 113 52810061	ENCODER

MACHINE #	WINDING P/N	COIL/WINDING EFFICIENCY (%)	FRAME/MAGNET SIZE (mm)	VOLTAGE (Vac)	MACHINE SPEED (rpm)	CAR SPEED 15" (fpm)	CAR SPEED 20" (fpm)
GL100-15L	GL100-170-150	87.2	100	170	76.4	150	200
GL100-15H	GL100-360-150	87.1	100	360	76.4	150	200
GL100-20L	GL100-170-200	89.2	100	170	101.9	200	267
GL100-20H	GL100-360-200	89.3	100	360	101.9	200	267

SECTION A-A
SCALE 1 / 4

Weight: 1341.86 lbmass
HOLLISTER-WHITNEY
 ELEVATOR CO.
 TITLE GEARLESS MACHINE, Max Cap. (15" TW, 3000# 2:1, 1500# 1:1) (20" TW, 2250# 2:1, 1125# 1:1)

F	ADD WIDE 20" TW & GUARD	LTL	7/11/11	DRAWN BY	SCALE	MATERIAL	SEE PARTS LIST	DIMENSIONAL TOL. 1 PLACE ±0.01 2 PLACE ±0.005 3 & 4 PLACE ±0.001 ANGLES ±0.1° REF - OPEN (NOMINAL) READING
E	UPDATE BRAKE, PUR #452	LTL	4/13/10					
D	ADD 7 & 8 GR. 15" SHEAVE, PUR #422	LTL	11/5/09	LTL	NA	DATE	1/6/2009	GL100
C	ADD 20" SHEAVE, GUARDS, BRAKE P/N, PUR #412	LTL	6/8/09	NA				
B	PARTS UPDATE, PUR 401	LTL	2/20/09	SHEET	C			
A	PARTS LIST UPDATE, PUR #385	LTL	2/2/09	SIZE				
K	BRAKE UPDATE REMOVE 146-002, PUR #608	LTL	8/9/13					
J	ADD EFFICIENCY TO WINDING CHART, PUR #592	LTL	4/18/13					
H	UPDATE BRAKE, PUR #513	LTL	7/20/12					
G	UPDATE CAPACITY, ADD MAYR BRAKE, PUR #482	LTL	4/2/12					



ITEM	QTY	PART NUMBER	DESCRIPTION
1	1	GL115-001	BASE HOUSING, MOTOR #GL115
2	1	GL115-002	ROTOR ASSEMBLY, MOTOR #GL115
2.1	1	GL115-004	ROTOR
2.2	28	GL115-099	PERMANENT MAGNET - MOTOR #GL115
3	1	GL100-005	BEARING CAP
4	1	GL100-007	TRACTION SHEAVE, 15" (Up to 6 Grooves)
		GL100-008	TRACTION SHEAVE, 20" (6 x 3/8", 5 x 1/2")
		GL100-009	TRACTION SHEAVE, 15" (7 or 8 Grooves)
		GL100-010	TRACTION SHEAVE, 20" (7 x 3/8", 6 x 1/2")
5	1	GL115-018	MAIN SHAFT
6	8	GL100-073	BODY BOLT
7	1	GL100-088	KEY - STATOR CORE TO BASE
8	1	GL100-089	Bearing, Sealed Double Row Cylindrical Roller
9	1	GL100-090	Bearings, Sealed Spherical Roller
10	1	GL100-092	RETAINING RING - SHAFT
11	1	GL100-093	RETAINING RING - HOUSING
12	1	GL100-094	CLAMP RING - STATOR ASSEMBLY
13	1	GL100-095	KEY - ROTOR TO SHAFT
14	1	GL115-170-350	CORE/WINDING ASSEMBLY (GL115-100 PRINT)
		GL115-360-350	
		GL115-170-500	
		GL115-360-500	
15	1	GL100-104	CAP
16	1	GL100-159	ENCLOSURE
17	2	GL100-160	BRACKET #1 - 15" SHEAVE GUARD
		GL100-160-1	BRACKET #1 - 20" SHEAVE GUARD
		GL100-161	GUARD - 15" TRACTION SHEAVE (NARROW)
18	1	GL100-161-1	GUARD - 20" TRACTION SHEAVE (NARROW)
		GL100-164	GUARD - 15" TRACTION SHEAVE (WIDE)
		GL100-164-1	GUARD - 20" TRACTION SHEAVE (WIDE)
19	1	GL100-162	BRACKET #2 - 15" SHEAVE GUARD
		GL100-162-1	BRACKET #2 - 20" SHEAVE GUARD
20	2	GL100-146	DISC BRAKE (MAYR #6) - MRL
20.1	2	GL100-146-115	MAYR BRAKE CALIPER #8211863 (104/52 Vdc)
22.2	2	142-001	BRAKE BASE
20.3	2	146-003	ELECTRICAL COVER
20.4	4	142-012	BRAKE ROD
20.5	4	3/8-16 UNC x 0.375	SET SCREW
20.6	8	1/2 - 13 UNC x 1.5	HEX HEAD CAP SCREW
20.7	8	1/2 WASHER	STANDARD WASHER
20.8	8	M6 x 1.00 x 8 mm	SOCKET HEAD CAP SCREW
21	8	M18 LOCKWASHER - DIN 127B	HELICAL SPRING LOCK WASHER - BODY LOLT
22	6	3/8 WASHER	HELICAL SPRING LOCK WASHER
23	6	3/8-16 UNC - 1.00	SOCKET HEAD CAP SCREW
24	6	3/8 - 16 UNC - 1 1/4	SOCKET HEAD CAP SCREW
25	1	1/2 - 13 UNC x 1.0	FLAT HEAD CAP SCREW
26	3	3/4 - 10 UNC x 1.0	HEX HEAD CAP SCREW
27	3	3/8 UNC	WHIZ NUT
28	7	3/8-16 UNC x 0.625	WHIZ BOLT
29	6	3/8 WASHER	SHCS LOCKWASHER
30	3	3/4 WASHER	STANDARD WASHER
31	3	3/4 WASHER	STANDARD LOCK WASHER
32	2	GL100-163	EYEBOLT & NUT
33	1	GL100-165	FELT DUST SEAL
34	1	ENC 113 52810061	ENCODER

MACHINE #	WINDING P/N	COIL/WINDING EFFICIENCY (%)	FRAME/MAGNET SIZE (mm)	VOLTAGE (Vac)	MACHINE SPEED (rpm)	CAR SPEED 15" (fpm)	CAR SPEED 20" (fpm)
GL115-35L	GL115-170-350	92.5	115	170	178.3	350	467
GL115-35H	GL115-360-350	92.6	115	360	178.3	350	467
GL115-50L	GL115-170-500	93.8	115	170	254.6	500	667
GL115-50H	GL115-360-500	93.7	115	360	254.6	500	667

SECTION A-A
SCALE 1/4

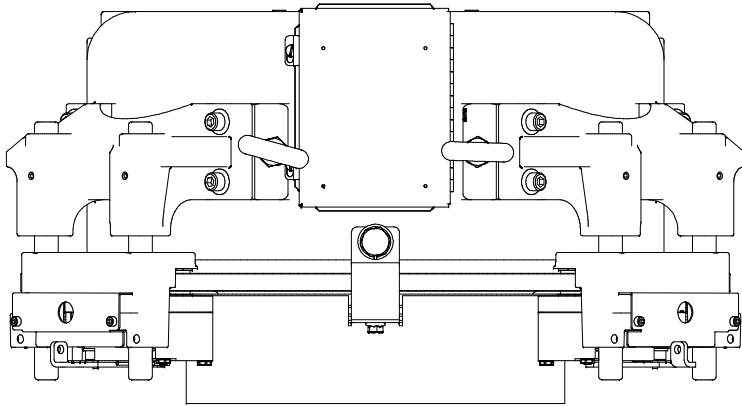
K	BRAKE UPDATE REMOVE 146-002, PUR #608	LTL	8/9/13	H	UPDATE BRAKE, PUR #513	LTL	7/20/12
J	ADD EFFICIENCY TO WINDING CHART, PUR #5924/18/13	LTL		G	UPDATE CAPACITY, ADD MAYR BRAKE, PUR #482	LTL	4/11/12

Weight: 1382.43 lbmass

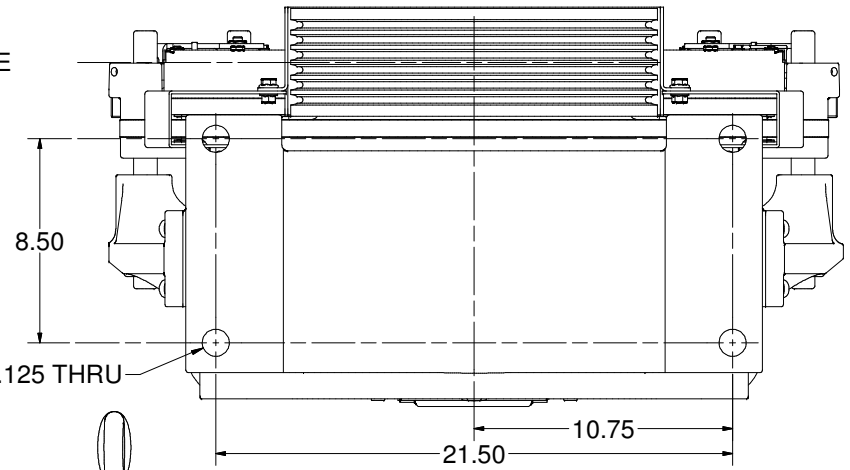
HOLLISTER-WHITNEY
ELEVATOR CO.

TITLE GEARLESS MACHINE, MAX CAP (15" TW 3500# 2:1, 1750# 1:1) (20" TW 2625# 2:1, 1312# 1:1)

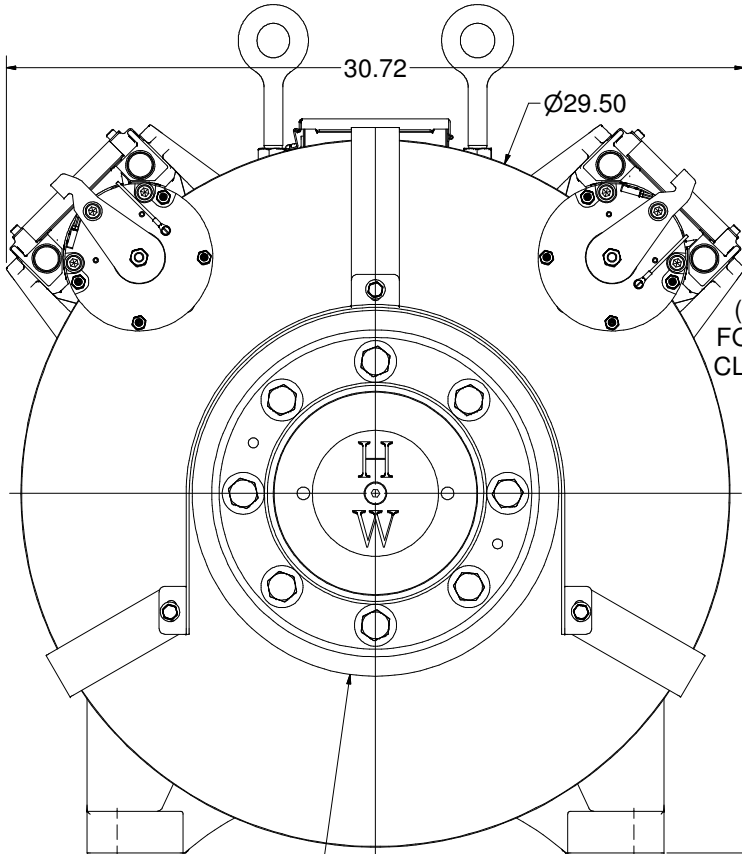
F	ADD WIDE 20" TW & GUARD	LTL	7/11/11	DRAWN BY	SCALE	MATERIAL	SEE PARTS LIST	DIMENSIONAL TOL. 1 PLACE #0.01 2 PLACE #0.005 3 & 4 PLACE #0.001 ANGLES #0.1° REF - OPEN (NOMINAL) READING
E	UPDATE BRAKE, PUR #452	LTL						
D	ADD 20" SHEAVE, GUARDS, BRAKE P/N, PUR #412	LTL	11/5/09					
C	PARTS UPDATE, PUR 401	LTL	6/8/09	LTL	NA	DATE	1/7/2009	GL115
B	PARTS UPDATE, PUR #390	LTL	2/20/09	LTL	NA	DATE		
A	PARTS LIST UPDATE, PUR #385	LTL	2/2/09	LTL	NA	DATE		



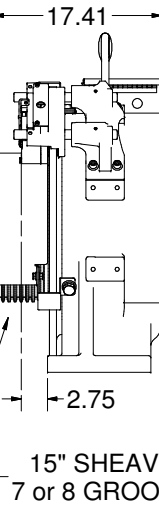
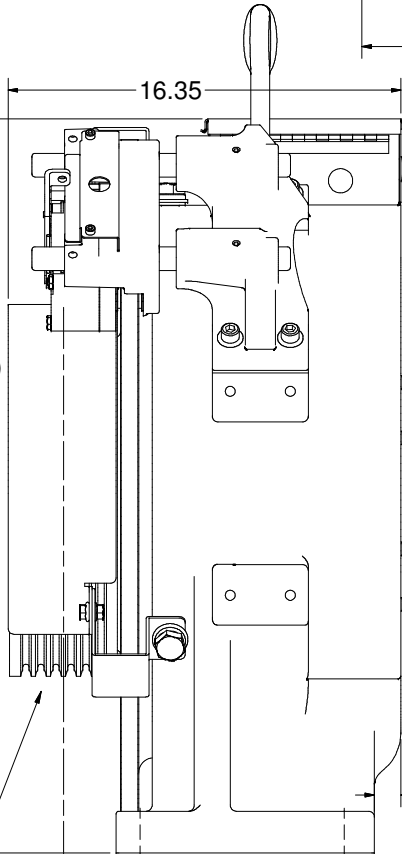
⊥ SHEAVE



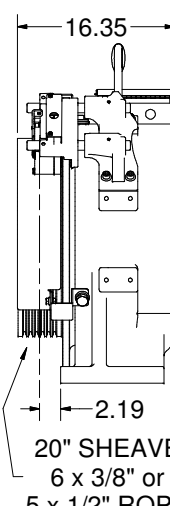
VIEW A-A
SCALE 1/4



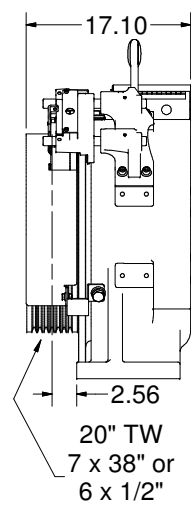
30.6
(PROVIDE FOR 42" MIN. CLEARANCE)



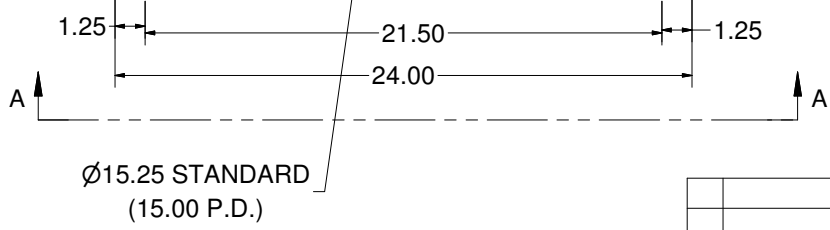
15" SHEAVE
7 or 8 GROOVE



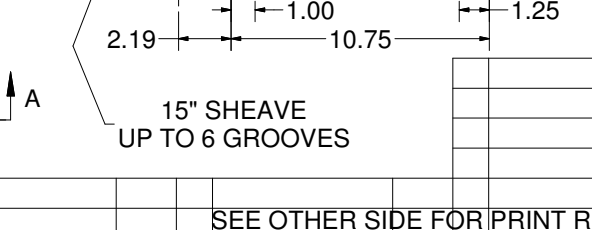
20" SHEAVE
6 x 3/8" or
5 x 1/2" ROPE



20" TW
7 x 38" or
6 x 1/2" ROPE



A



15" SHEAVE
UP TO 6 GROOVES

Weight: 1382.43 lbmass

HOLLISTER-WHITNEY
ELEVATOR CO.

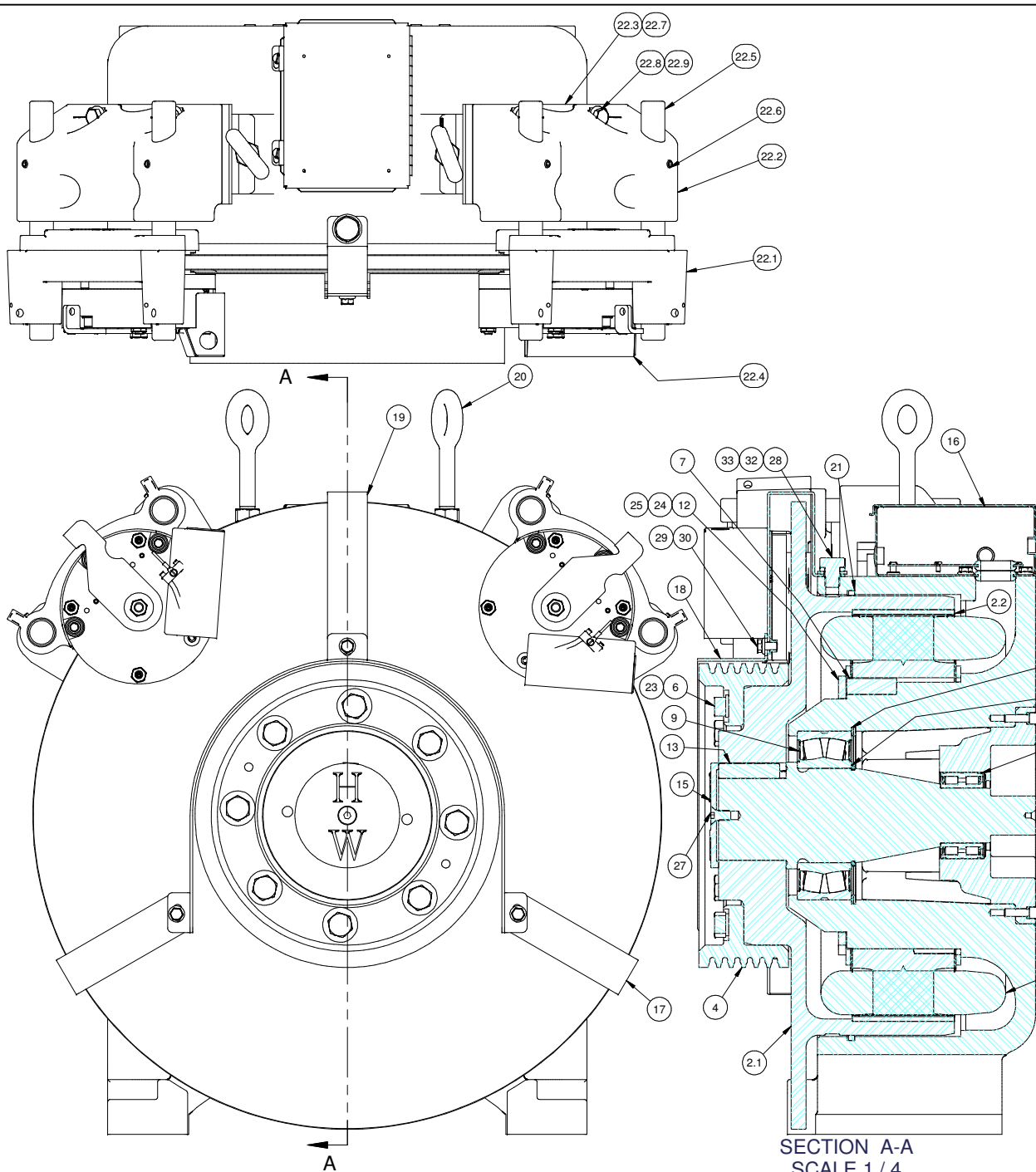
TITLE GEARLESS MACHINE, MAX CAP (15" TW 3500# 2:1, 1750# 1:1) (20" TW 2625# 2:1, 1312# 1:1)

DRAWN BY LTL SCALE 1:4 MATERIAL SEE PARTS LIST DIMENSIONAL TOL. 1 PLACE ±0.01 2 PLACE ±0.005 3 & 4 PLACE ±0.001 ANGLES ±0.1° REF - OPEN (NOMINAL) READING

SEE OTHER SIDE FOR PRINT REVISIONS

SHEET SIZE C DATE 1/7/2009

GL115



ITEM	QTY	PART NUMBER	DESCRIPTION
1	1	GL130-001	BASE HOUSING, MOTOR #GL130
2	1	GL130-002	ROTOR ASSEMBLY, MOTOR #GL130
2.1	1	GL130-004	ROTOR
2.2	28	GL130-099	PERMANENT MAGNET - MOTOR #GL130
3	1	GL130-005	BEARING CAP
4	1	GL100-007	TRACTION SHEAVE, 15" (Up to 6 Grooves)
		GL100-008	TRACTION SHEAVE, 20"
		GL100-009	TRACTION SHEAVE, 15" (7 or 8 Grooves)
		GL100-010	TRACTION SHEAVE, 20" (7 x 3/8", 6 x 1/2")
5	1	GL130-018	MAIN SHAFT
6	8	GL100-073	BODY BOLT
7	1	GL100-088	KEY - STATOR CORE TO BASE
8	1	GL100-089	Bearing, Sealed Double Row Cylindrical Roller
9	1	GL130-090	Bearings, Sealed Spherical Roller
10	1	GL130-092	RETAINING RING - SHAFT
11	1	GL130-093	RETAINING RING - HOUSING
12	1	GL100-094	CLAMP RING - STATOR ASSEMBLY
13	1	GL100-095	KEY - ROTOR TO SHAFT
14	1	GL130-170-200	WINDING ASSEMBLY (PRINT GL130-100)
		GL130-360-200	
		GL130-170-350	
		GL130-360-350	
15	1	GL100-104	CAP
16	1	GL100-159	ENCLOSURE
17	2	GL130-160	BRACKET #1 - 15" SHEAVE GUARD
		GL130-160-1	BRACKET #1 - 20" SHEAVE GUARD
18	1	GL100-161	GUARD - 15" TRACTION SHEAVE (NARROW)
		GL100-161-1	GUARD - 20" TRACTION SHEAVE (NARROW)
		GL100-164	GUARD - 15" TRACTION SHEAVE (WIDE)
		GL100-164-1	GUARD - 20" TRACTION SHEAVE (WIDE)
19	1	GL130-162	BRACKET #2 - 15" SHEAVE GUARD
		GL130-162-1	BRACKET #2 - 20" SHEAVE GUARD
20	2	GL100-163	EYEBOLT & NUT
21	1	GL100-165	FELT DUST SEAL
22	2	GL130-144	DISC BRAKE (MAYR #8) - MRL (15" TW)
22.1	2	GL130-144-115	MAYR #8; RSD8 510 03 #8211833 (104/52 Vdc)
22.2	2	144-001	BRAKE BASE
22.3	2	144-002	BLOCKING PLATE
22.4	2	144-003	ELECTRICAL COVER
22.5	4	144-012	BRAKE ROD
22.6	4	3/8-16 UNC x 0.375	SET SCREW
22.7	8	1/2-13 UNC x 1.5	FLAT HEAD CAP SCREWS
22.8	8	1/2-13 UNC x 1.75	HEX HEAD CAP SCREW
22.9	8	1/2 WASHER	STANDARD WASHER
23	8	M18 LOCKWASHER - DIN 127B	HELICAL SPRING LOCK WASHER - BODY BOLT
24	6	3/8 WASHER	HELICAL SPRING LOCK WASHER
25	6	3/8-16 UNC - 1.00	SOCKET HEAD CAP SCREW
26	8	3/8 - 16 UNC - 1 1/4	SOCKET HEAD CAP SCREW
27	1	1/2 - 13 UNC x 1.0	FLAT HEAD CAP SCREW
28	3	3/4 - 10 UNC x 1.0	HEX HEAD CAP SCREW
29	3	3/8 UNC	WHIZ NUT
30	7	3/8-16 UNC x 0.625	WHIZ BOLT
31	8	3/8 WASHER	SHCS LOCKWASHER
32	3	3/4 WASHER	STANDARD WASHER
33	3	3/4 WASHER	STANDARD LOCK WASHER
34	1	ENC 113 5210061	ENCODER

G
E
G
E
F
G
J

SECTION A-A
SCALE 1/4

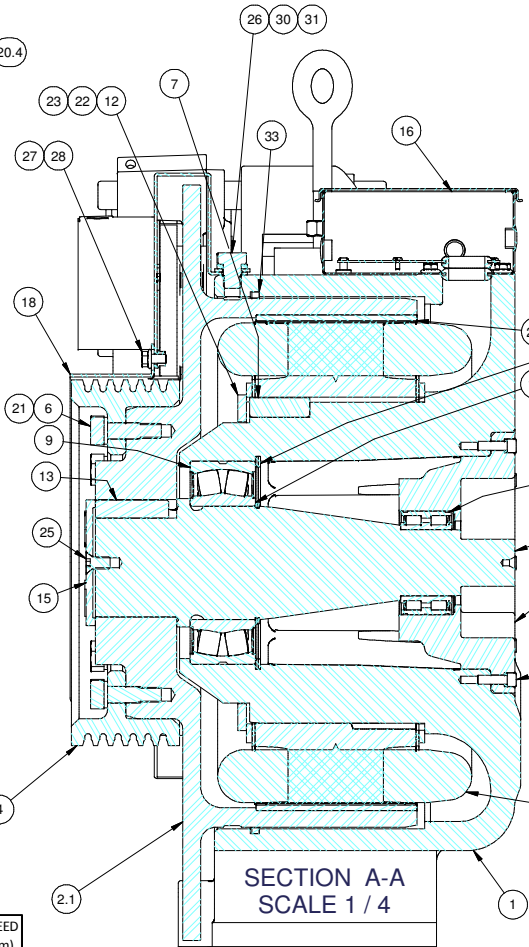
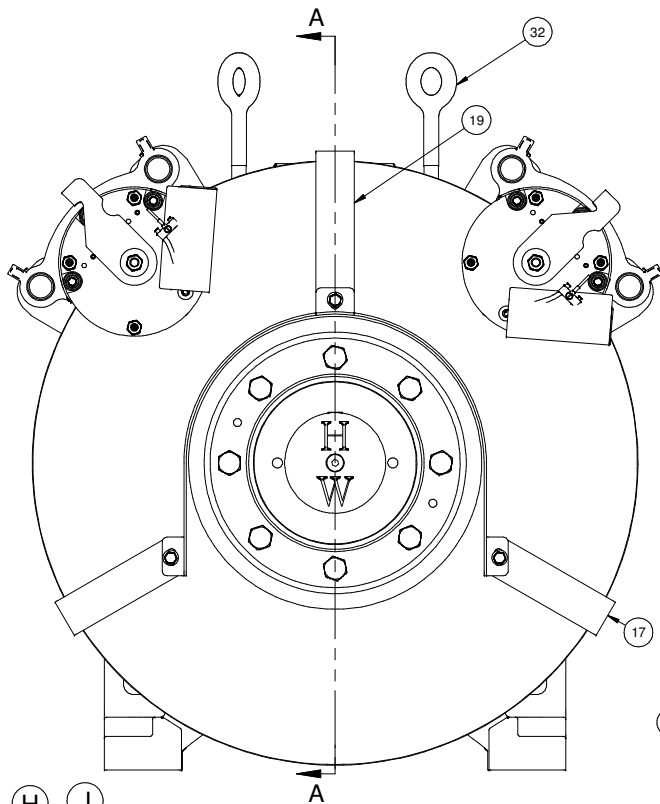
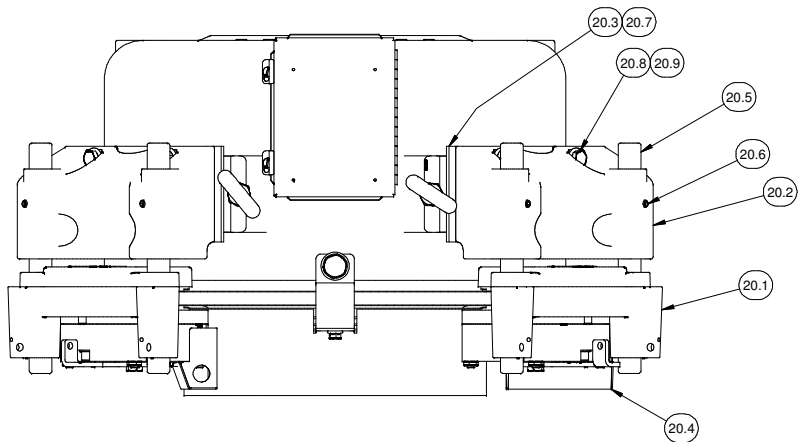
MACHINE #	WINDING P/N	COIL/WINDING EFFICIENCY (%)	FRAME/MAGNET SIZE (mm)	VOLTAGE (Vac)	MACHINE SPEED (rpm)	CAR SPEED 15" (fpm)	CAR SPEED 20" (fpm)
GL130-20L	GL130-170-200	90.6	130	170	101.9	200	267
GL130-20H	GL130-360-200	90.7	130	360	101.9	200	267
GL130-35L	GL130-170-350	93.1	130	170	178.3	350	467
GL130-35H	GL130-360-350	93	130	360	178.3	350	467

Weight: 1694.03 lbmass

F	UPDATE CAPACITY, 15" & 20" BRAKE, PUR #482	LTL 3/14/12	DRAWN BY: LTL NA	SCALE: C	MATERIAL: SEE PARTS LIST	DIMENSIONAL TOL: 1 PLACE #0.01 2 PLACE #0.005 3 & 4 PLACE #0.001 ANGLES #0.1° REF - OPEN (NOMINAL) READING
E	ADD WIDE 20" TW & GUARD	LTL 7/11/11				
D	UPDATE BRAKE, PUR #452	LTL 4/16/10	TITLE: GEARLESS MACHINE, MAX CAP (15" TW 4000# 2:1, 2000# 1:1) (20" TW 3000# 2:1, 1500# 1:1)			
C	ADD 20" SHEAVE, GUARDS, BRAKE P/N, PUR #412	LTL 11/5/09	DATE: 2/4/2009			
B	ADD 200 fpm WINDINGS, PARTS UPDATE, PUR #401	LTL 6/11/09	SHEET: 2/20/09			
A	PARTS UPDATE, PUR #390	LTL 2/20/09	SIZE: C			

HOLLISTER-WHITNEY
ELEVATOR CO.

GL130



(C)
(J)
(F)
(C)
(F)
(D)
(E)
(F)
(G)
(J)
(H)
(J)

ITEM	QTY	PART NUMBER	DESCRIPTION
1	1	GL170-001	BASE HOUSING, MOTOR #GL170
2	1	GL170-002	ROTOR ASSEMBLY, MOTOR #GL170
2.1	1	GL170-004	ROTOR
2.2	28	GL170-099	PERMANENT MAGNET - MOTOR #GL170
3	1	GL130-005	BEARING CAP
4	1	GL100-007	TRACTION SHEAVE, 15" (Up to 6 Grooves)
		GL100-008	TRACTION SHEAVE, 20" (6 x 3/8", 5 x 1/2")
		GL100-009	TRACTION SHEAVE, 15" (7 or 8 Grooves)
		GL100-010	TRACTION SHEAVE, 20" (7 x 3/8", 6 x 1/2")
5	1	GL170-018	MAIN SHAFT
6	8	GL100-073	BODY BOLT
7	1	GL100-088	KEY - STATOR CORE TO BASE
8	1	GL100-089	BEARING, SEALED DBL ROW CYL. ROLLER
9	1	GL130-090	SEALED SPHERICAL ROLLER BEARING
10	1	GL130-092	RETAINING RING - SHAFT
11	1	GL130-093	RETAINING RING - HOUSING
12	1	GL100-094	CLAMP RING - STATOR ASSEMBLY
13	1	GL100-095	KEY - ROTOR TO SHAFT
14	1	GL171-100	WINDING ASSEMBLY - (1:1 in 2:1 Application) SEE BELOW
		GL170-100	WINDING ASSEMBLY - (2:1 in 2:1 Application) SEE BELOW
15	1	GL100-104	CAP
16	1	GL100-159	ENCLOSURE
17	2	GL130-160	BRACKET #1 - 15" SHEAVE GUARD
		GL130-160-1	BRACKET #1 - 20" SHEAVE GUARD
18	1	GL100-161	GUARD - 15" TRACTION SHEAVE (Narrow)
		GL100-161-1	GUARD - 20" TRACTION SHEAVE (Narrow)
		GL100-164	GUARD - 15" TRACTION SHEAVE (Wide)
		GL100-164-1	GUARD - 20" TRACTION SHEAVE (Wide)
19	1	GL130-162	BRACKET #2 - 15" SHEAVE GUARD
		GL130-162-1	BRACKET #2 - 20" SHEAVE GUARD
20	2	GL130-144	DISC BRAKE (MAYR #8) - 1 Main & 1 E. Brake (see Windings Chart)
		GL130-144-115	MAYR #8; RSD8 510 03 #8211833 (104/52 Vdc)
20.1	2	GL100-146	DISC BRAKE (MAYR #6) - 2 Main & 2 E. Brakes (see Windings Chart)
20.2	2	144-001	BRAKE BASE
20.3	2	144-002	BRAKE BLOCKING PLATE
20.4	2	144-003	ELECTRICAL COVER
20.5	4	144-012	BRAKE ROD
20.6	4	3/8-16 UNC x 0.375	SET SCREW
20.7	8	1/2 - 13 UNC x 1.5	FLAT HEAD CAP SCREW
20.8	8	1/2 - 13 UNC x 1.75	HEX HEAD CAP SCREW
20.9	8	1/2 WASHER	STANDARD WASHER
20*	4	GL100-146	DISC BRAKE (MAYR #6) - 2 Main & 2 E. Brakes (see Windings Chart)
20.1	4	GL100-146-115	MAYR #6 RSD6 894 510 03 #8211863 (104/52 VDC)
20.2	4	142-001	BRAKE BASE
20.3	4	146-003	COVER - MAYR #6 ELECTRICAL
20.4	8	142-012	BRAKE ROD
20.5	8	3/8-16 UNC x 0.375	SET SCREW
20.6	4	M6 x 1.00 x 8mm	SHCS - Metric
20.7	8	1/2-13 UNC x 2	SOCKET HEAD CAP SCREW
20.8	8	1/2" WASHER	STANDARD WASHER
21	8	M18 LOCKWASHER - DIN 127B	HELICAL SPRING LOCK WASHER - BODY BOLT
22	6	3/8 WASHER	HELICAL SPRING LOCK WASHER
23	6	3/8 - 16 UNC - 1	SOCKET HEAD CAP SCREW
24	8	3/8 - 16 UNC - 1 1/4	SOCKET HEAD CAP SCREW
25	1	1/2 - 13 UNC x 1.0	FLATHEAD CAP SCREW
26	3	3/4 - 10 UNC x 1.0	HEX HEAD CAP SCREW
27	3	3/8 UNC	WHIZ NUT
28	7	3/8-16 UNC x 0.625	WHIZ BOLT
29	8	3/8 WASHER	SHCS LOCK WASHER
30	3	3/4 WASHER	STANDARD WASHER
31	3	3/4 WASHER	STANDARD LOCK WASHER

SECTION A-A
SCALE 1 / 4

MACHINE #	WINDING P/N	COIL/WINDING EFFICIENCY (%)	FRAME/MAGNET SIZE (mm)	VOLTAGE (Vac)	MACHINE SPEED (rpm)	CAR SPEED 15" (fpm)	CAR SPEED 20" (fpm)	
Windings as Designed for 2:1 Applications with 50% CB: Capacity =							5000 lbs	3750 lbs
GL170-35L	GL170-170-350	93.9	170	170	178.3	350	467	
GL170-35H	GL170-360-350	94	170	360	178.3	350	467	
Windings Designed for 1:1 used in 2:1 Applications with 50% CB: Capacity =							6000 lbs	4500 lbs
GL170-20L*	GL171-170-200	87	170	170	38.2	75	100	
GL170-20H*	GL171-360-200	87	170	360	38.2	75	100	
GL170-40L*	GL171-170-400	87	170	170	76.4	150	200	
*	2 Primary & 2 Secondary Mayr #6 Brakes if Capacity over					5000 lbs	3750 lbs	

J	UPDATE WINDING CHART & LTL	11/22/16	E	UPDATE CAPACITY, ADD LTL	4/11/12
H	ADD EFFICIENCY TO WINDING CHART, PUR #5924	4/18/13	D	REMOVE 2 STEARNS, ADD 4 WARNER, PUR #465	10/3/11
G	BRAKE UPDATE, PUR#513	LTL	C	ADD WIDE 20" T.W. & GUARD, PUR #452	7/8/11
F	DISC WAS 29.5", HT.WAS 15". REMOVE WARNER, CORRECT CAP.TYPO, UPDATE GUARD BRACKET P/N, PUR#496	6/26/12	B	PARTS UPDATE, PUR #423	4/26/10
			A	PARTS UPDATE, PUR #390	2/20/09

Weight: 1842.21 lbmass

HOLLISTER-WHITNEY
ELEVATOR CO.

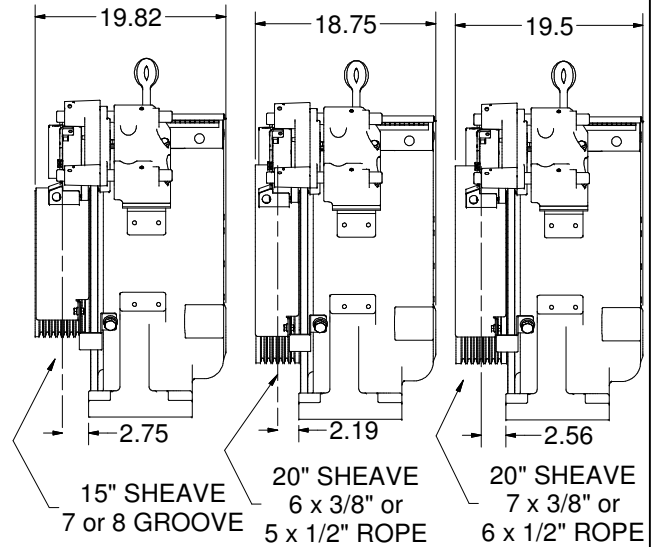
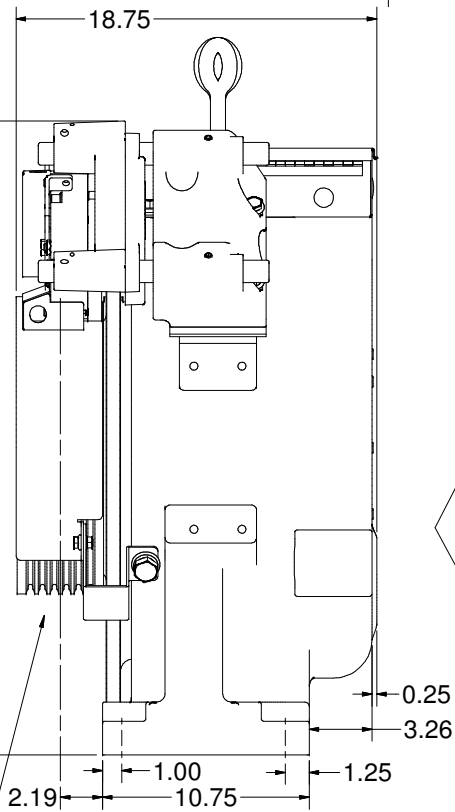
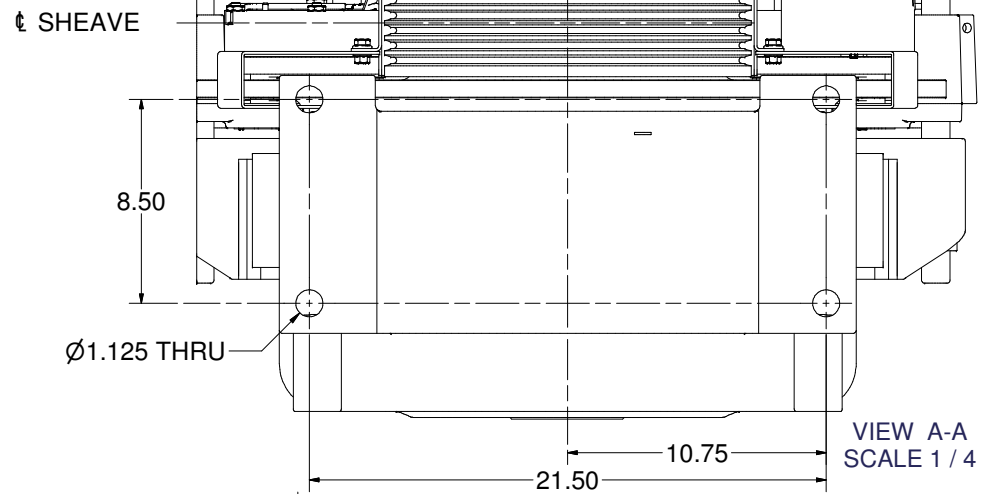
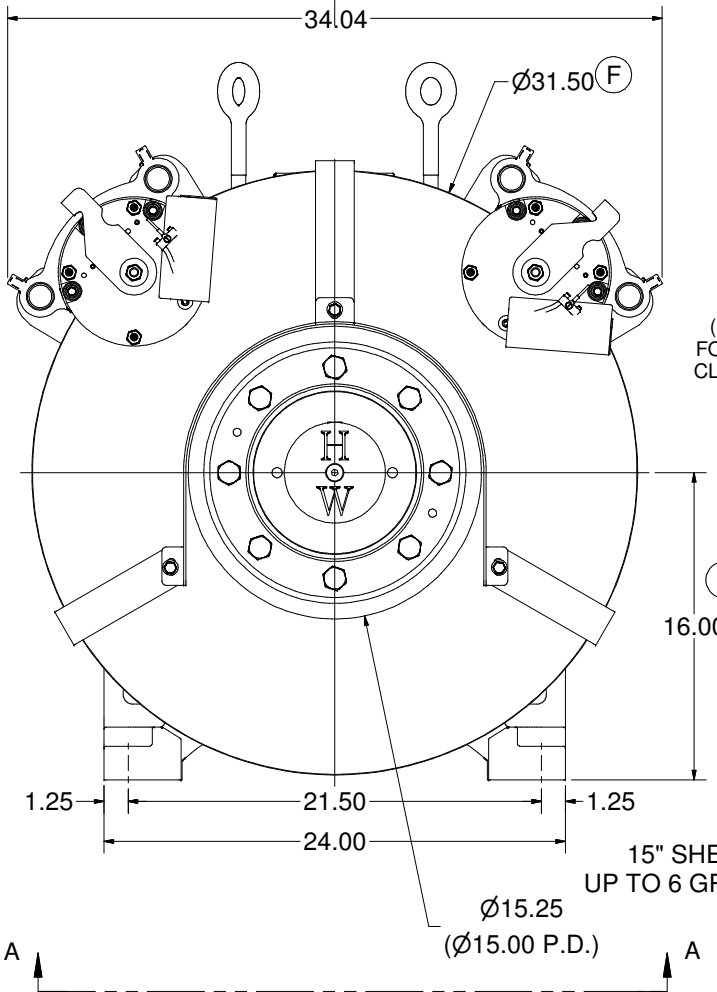
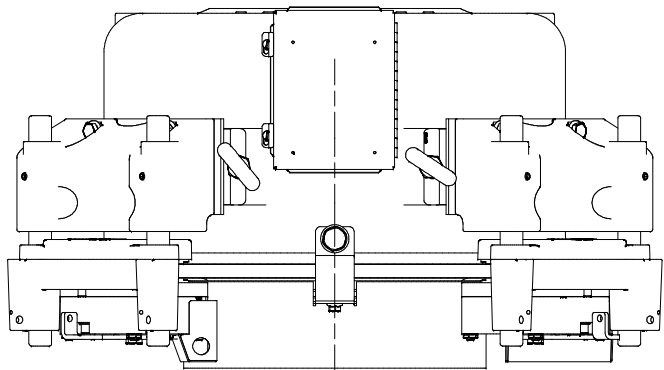
GEARLESS MACHINE

DRAWN BY: LTL
SCALE: NA
MATERIAL: SEE PARTS LIST

DATE: 2/4/2009

DIMENSIONAL TOL:
1 PLACE ±0.01 2 PLACE ±0.005
3 & 4 PLACE ±0.001 ANGLES ±0.1°
REF - OPEN (NOMINAL) READING

GL170



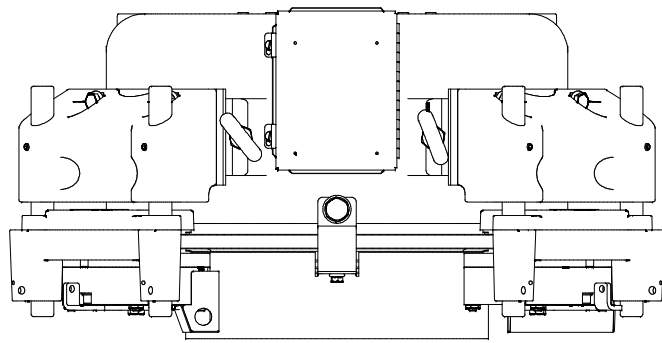
Weight: 1842.21 lbmass

HOLLISTER-WHITNEY
ELEVATOR CO.

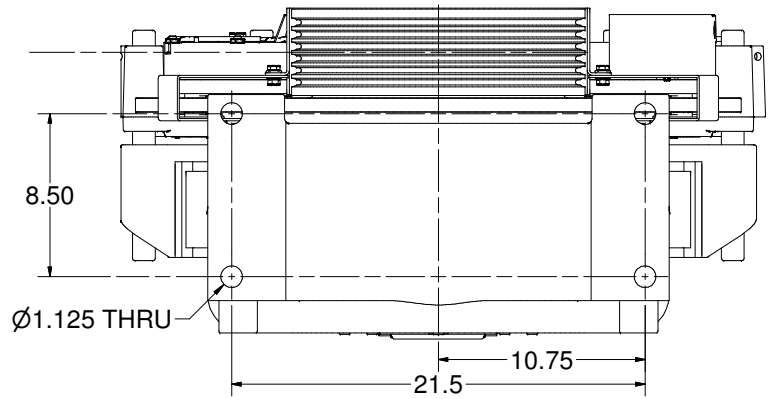
GEARLESS MACHINE

SEE NEXT PAGE FOR PRINT UPDATES

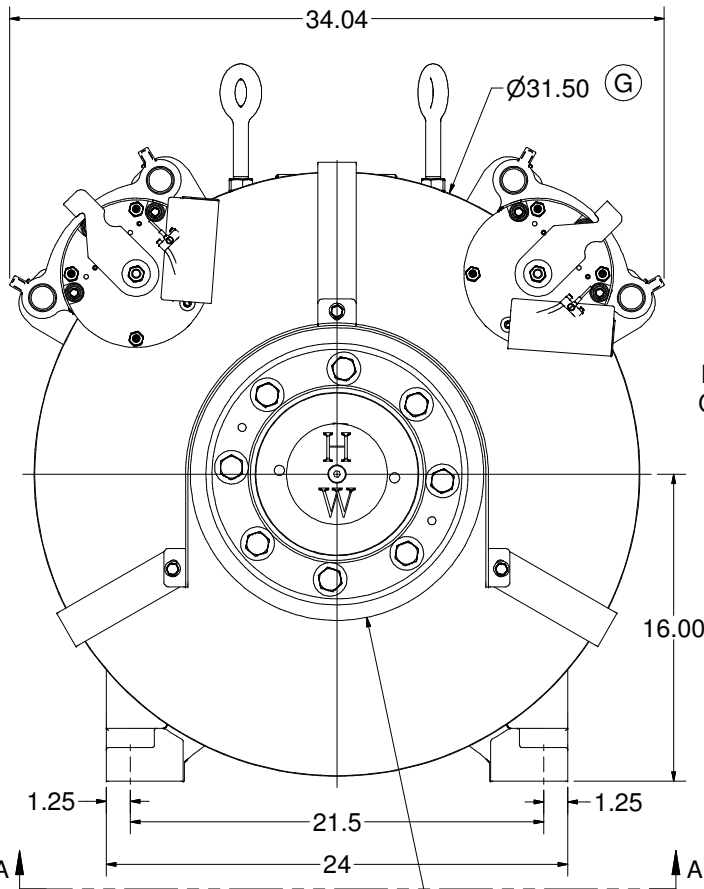
DRAWN BY		SCALE	MATERIAL	DIMENSIONAL TOL.	
LTL		NA	SEE PARTS LIST	1 PLACE ±0.01 2 PLACE ±0.005	
SHEET C		DATE	2/4/2009	3 & 4 PLACE ±0.001 ANGLES ±0.1°	
SIZE				REF - OPEN (NOMINAL) READING	
					GL170



↑ SHEAVE

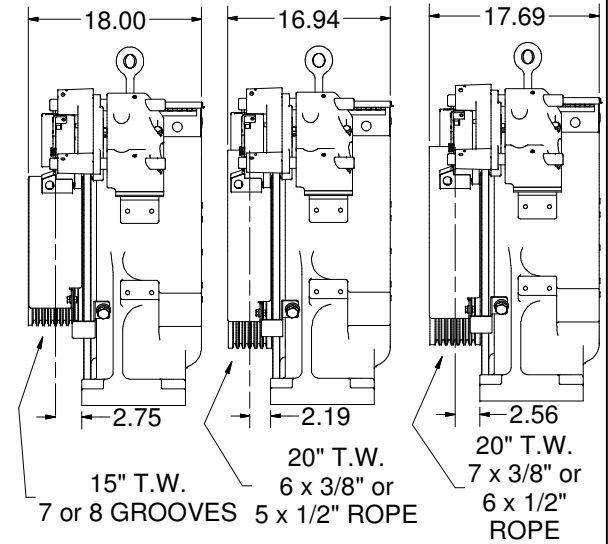
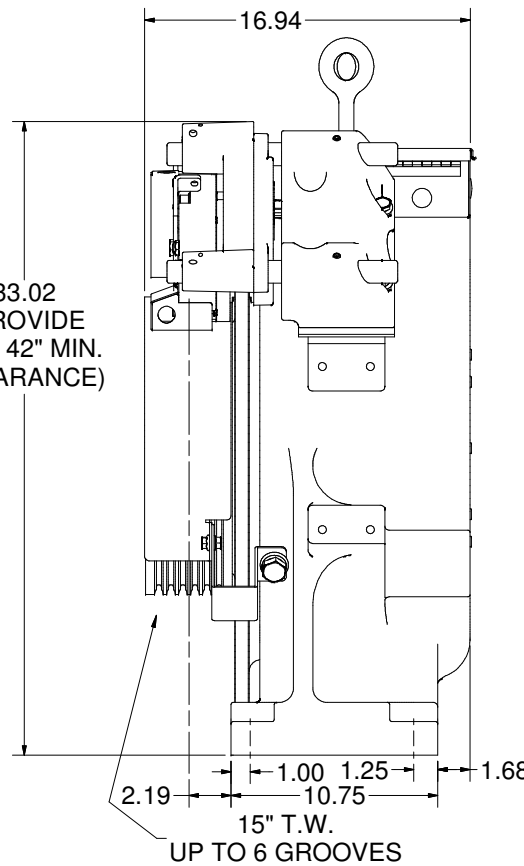


VIEW A-A
SCALE 1/5



33.02
(PROVIDE
FOR 42" MIN.
CLEARANCE)

ⓐ



15" T.W.
7 or 8 GROOVES

20" T.W.
6 x 3/8" or
5 x 1/2" ROPE

20" T.W.
7 x 3/8" or
6 x 1/2" ROPE

Weight: 1694.03 lbmass

HOLLISTER-WHITNEY
ELEVATOR CO.

TITLE GEARLESS MACHINE, MAX CAP (15" TW 4000#
2:1, 2000# 1:1) (20" TW 3000# 2:1, 1500# 1:1)

DRAWN BY LTL NA SCALE C MATERIAL SEE PARTS LIST DIMENSIONAL TOL:
1 PLACE ±0.01 2 PLACE ±0.005
3 & 4 PLACE ±0.001 ANGLES ±0.1°
REF - OPEN (NOMINAL) READING

SEE OTHER SIDE FOR REVISIONS

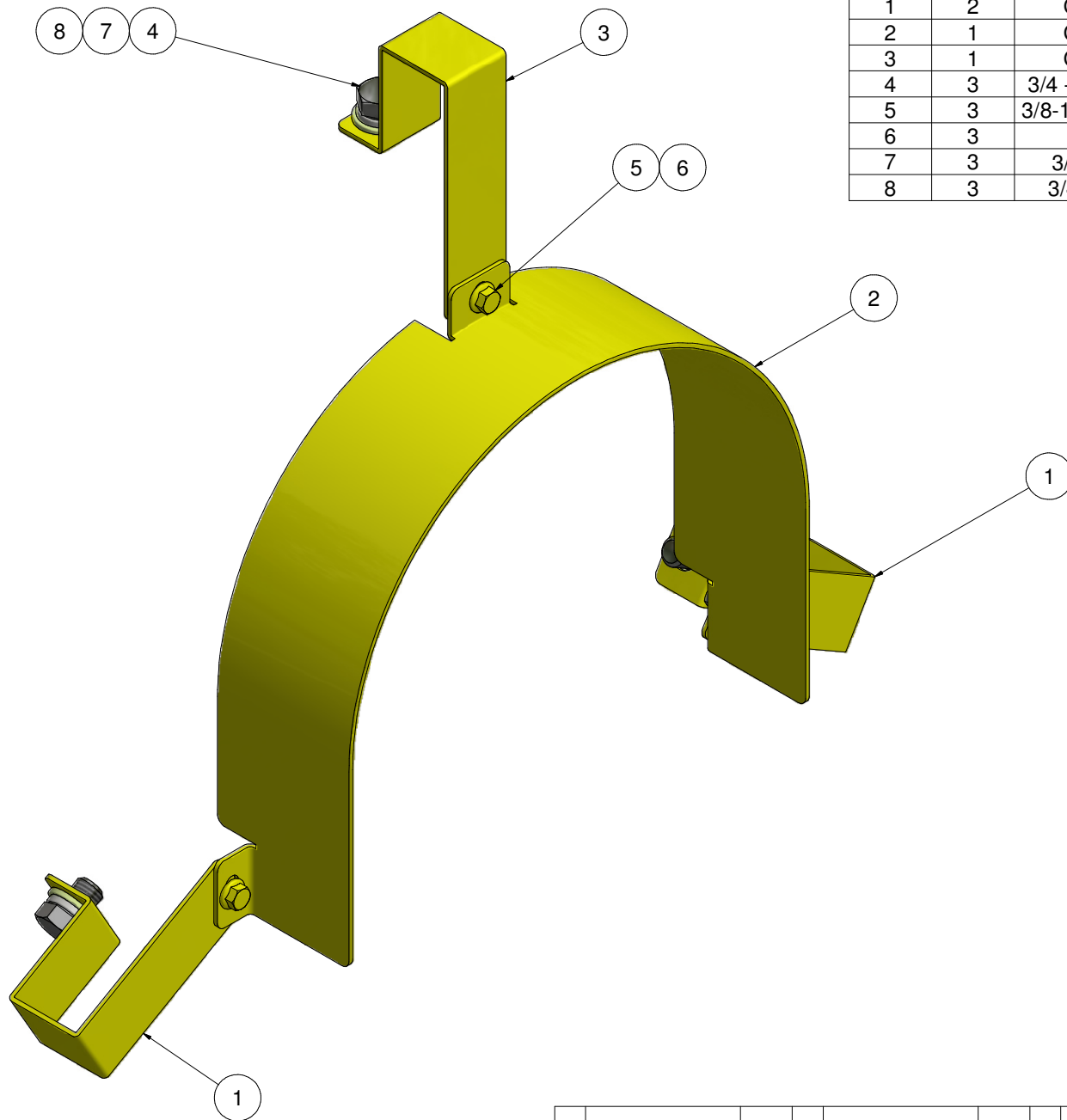
SHEET SIZE C DATE 2/4/2009

GL130

Ø15.25 STANDARD
(15.00 P.D.)

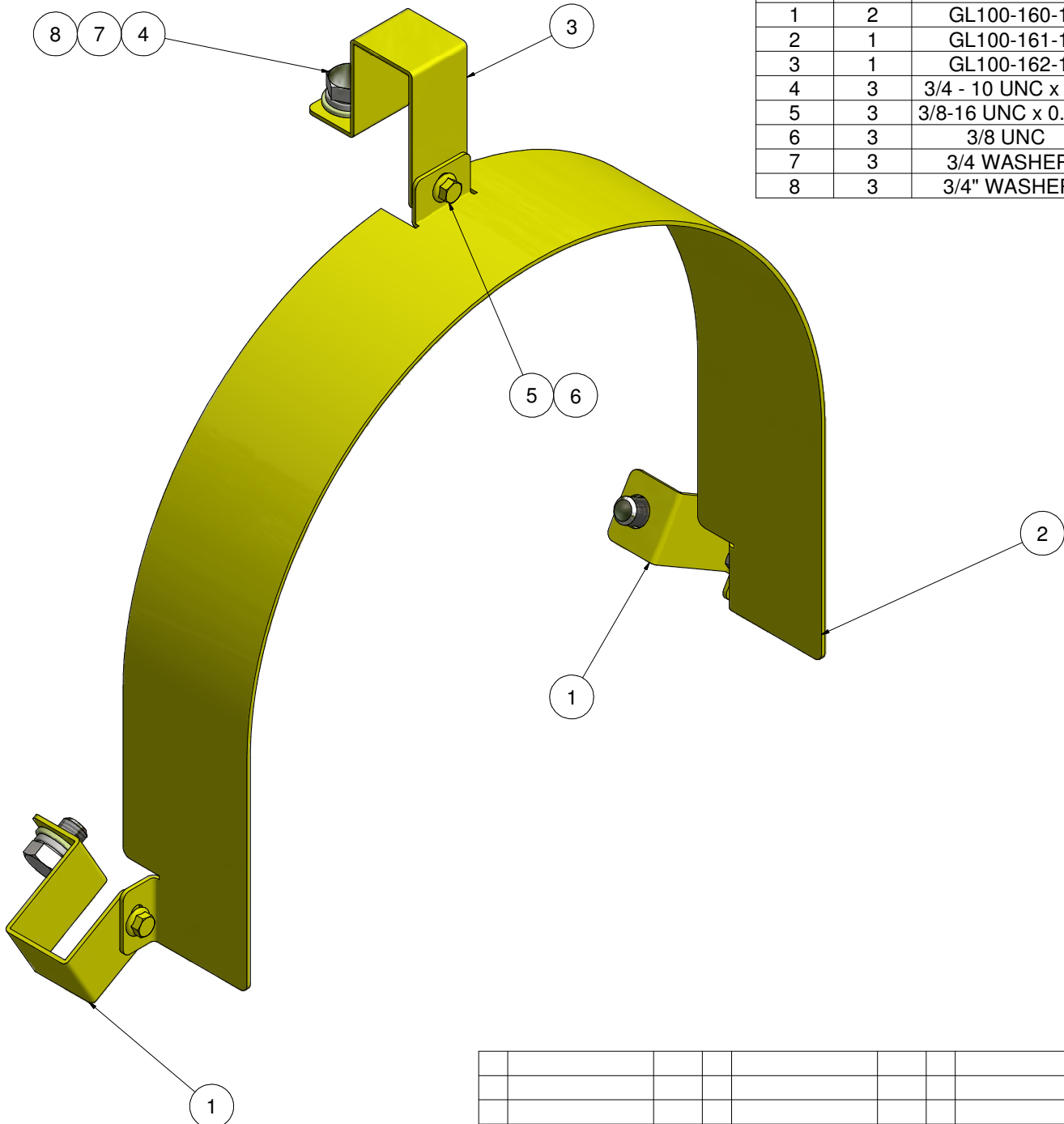
Parts List

ITEM	QTY	PART NUMBER	DESCRIPTION
1	2	GL100-160	BRACKET #1 - 15" SHEAVE GUARD
2	1	GL100-161	GUARD - 15" TRACTION SHEAVE
3	1	GL100-162	BRACKET #2 - 15" SHEAVE GUARD
4	3	3/4 - 10 UNC x 1.0	HEX HEAD CAP SCREW
5	3	3/8-16 UNC x 0.625	WHIZ BOLT
6	3	3/8 UNC	WHIZ NUT
7	3	3/4 WASHER	SAE WASHER
8	3	3/4" WASHER	STANDARD LOCK WASHER



Weight: 8.91 lbmass

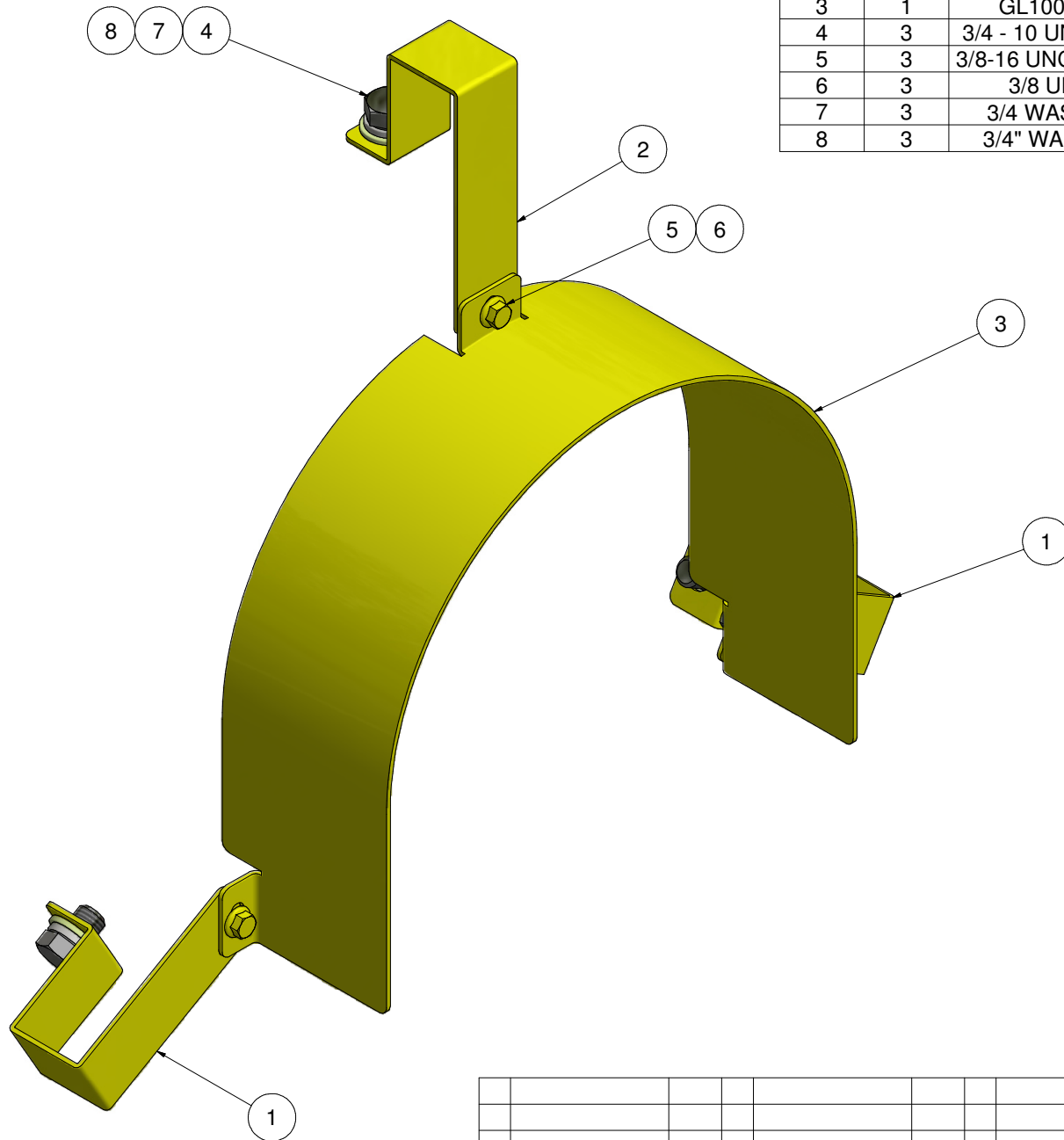
										HOLLISTER-WHITNEY					
										ELEVATOR CO.					
										TITLE					
										GEARLESS MACHINE GUARD, NARROW 15"					
										TW					
										DRAWN BY	SCALE	MATERIAL	DIMENSIONAL TOL.		
										LTL	NA	SEE PARTS LIST	1 PLACE ±0.01; 2 PLACE ±0.005; 3 & 4 PLACE ±0.001; ANGLES ±0.1° REF., OPEN, (NOMINAL) ± 0.0156		
										A	PRODUCTION RELEASE, PUR #484	LTL 4/10/12	SHEET C	DATE 4/10/2012	GL100-176



Parts List			
ITEM	QTY	PART NUMBER	DESCRIPTION
1	2	GL100-160-1	BRACKET #1 - 20" SHEAVE GUARD
2	1	GL100-161-1	GUARD - 20" TRACTION SHEAVE
3	1	GL100-162-1	BRACKET #2 - 20" SHEAVE GUARD
4	3	3/4 - 10 UNC x 1.0	HEX HEAD CAP SCREW
5	3	3/8-16 UNC x 0.625	WHIZ BOLT
6	3	3/8 UNC	WHIZ NUT
7	3	3/4 WASHER	SAE WASHER
8	3	3/4" WASHER	STANDARD LOCK WASHER

Weight: 10.07 lbmass

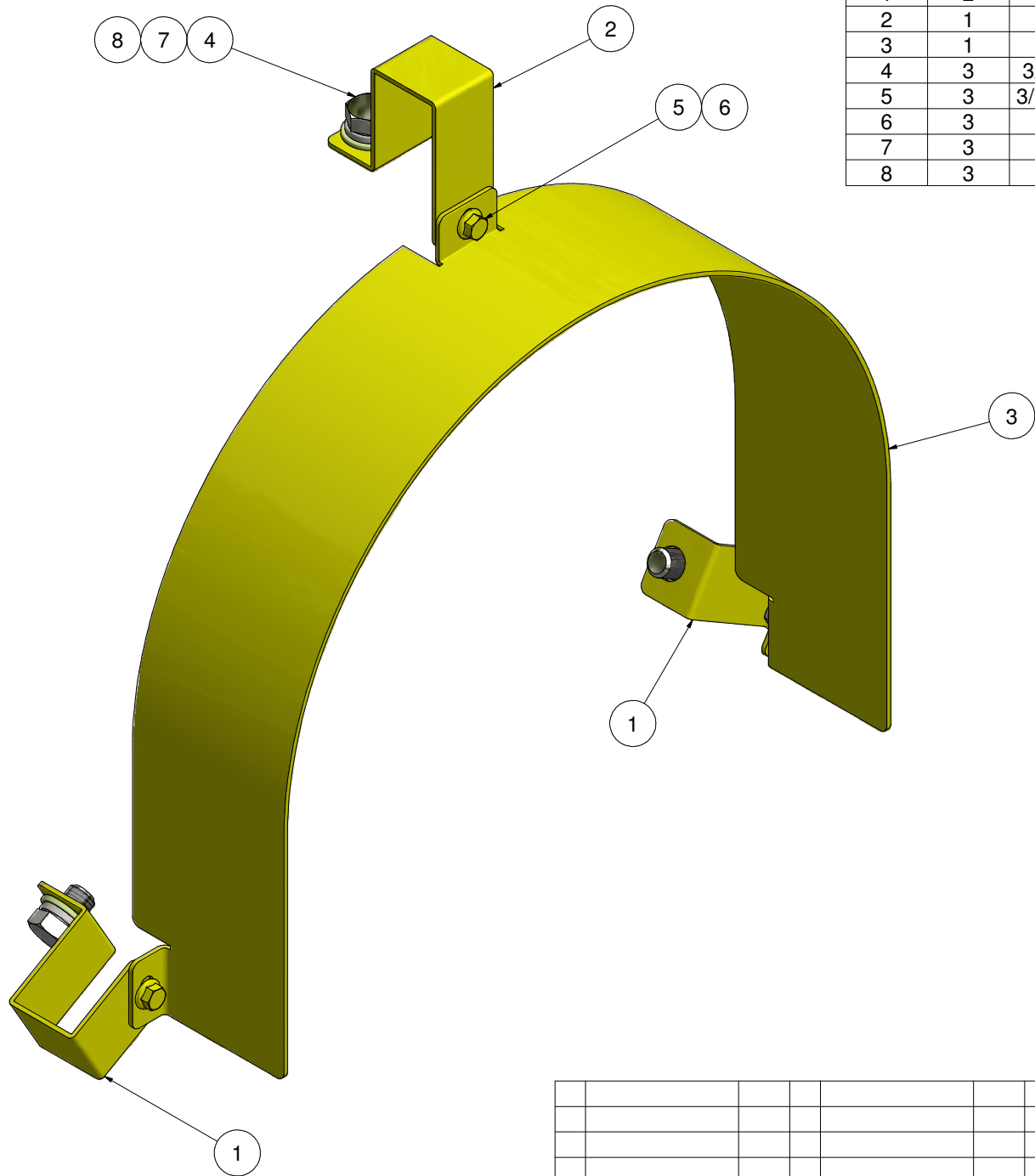
						HOLLISTER-WHITNEY					
						ELEVATOR CO.					
						TITLE GEARLESS MACHINE GUARD, NARROW 20" TW					
						DRAWN BY	SCALE	MATERIAL	DIMENSIONAL TOL. 1 PLACE ±0.01; 2 PLACE ±0.005; 3 & 4 PLACE ±0.001; ANGLES ±0.1° REF., OPEN, (NOMINAL) ± 0.0156		
						LTL	NA	SEE PARTS LIST			
						A	PRODUCTION RELEASE, PUR #484	LTL 4/10/12	SHEET C	DATE 4/10/2012	GL100-176-1



Parts List			
ITEM	QTY	PART NUMBER	DESCRIPTION
1	2	GL100-160	BRACKET #1 - 15" SHEAVE GUARD
2	1	GL100-162	BRACKET #2 - 15" SHEAVE GUARD
3	1	GL100-164	GUARD - 15" TRACTION SHEAVE
4	3	3/4 - 10 UNC x 1.0	HEX HEAD CAP SCREW
5	3	3/8-16 UNC x 0.625	WHIZ BOLT
6	3	3/8 UNC	WHIZ NUT
7	3	3/4 WASHER	SAE WASHER
8	3	3/4" WASHER	STANDARD LOCK WASHER

Weight: 10.20 lbmass

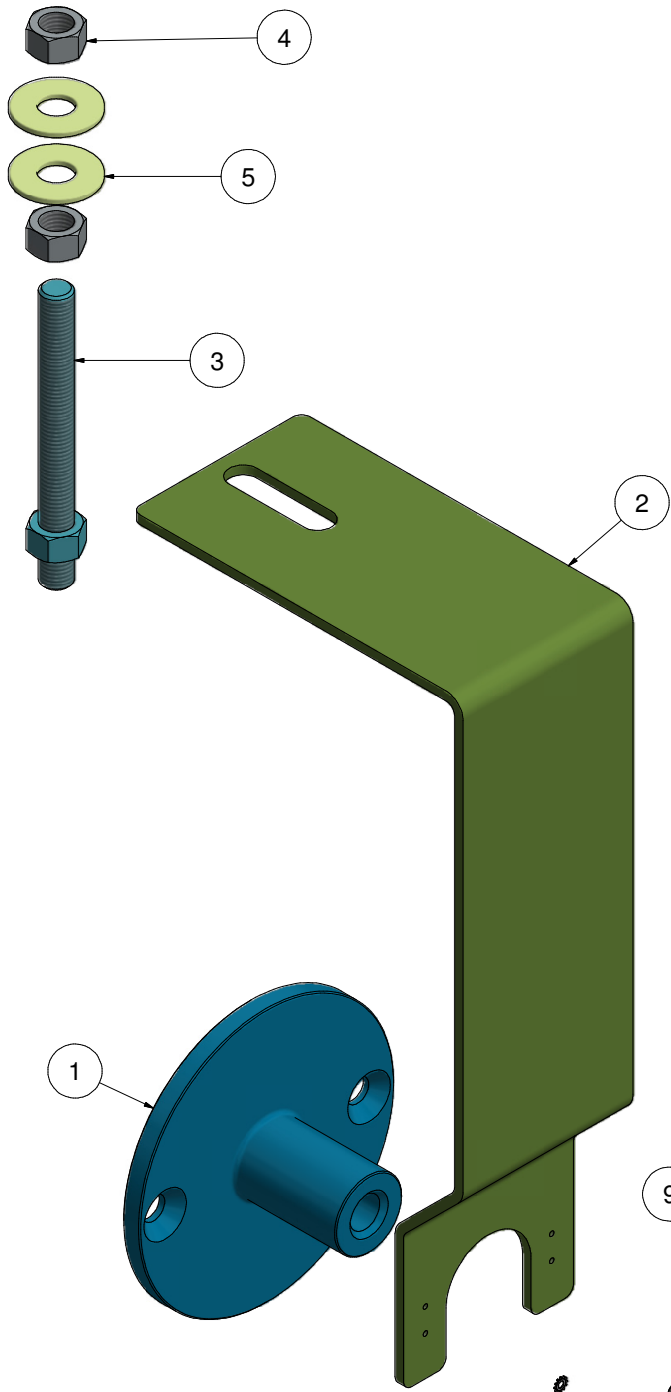
				HOLLISTER-WHITNEY			
				ELEVATOR CO.			
				TITLE GEARLESS MACHINE GUARD, WIDE 15" TW			
		DRAWN BY		SCALE		MATERIAL	
		LTL		NA		SEE PARTS LIST	
		PRODUCTION RELEASE, PUR #484		LTL 4/10/12		DATE 1/6/2009	
		SHEET SIZE		C		DIMENSIONAL TOL. 1 PLACE ±0.01; 2 PLACE ±0.005; 3 & 4 PLACE ±0.001; ANGLES ±0.1 REF., OPEN, (NOMINAL) ± 0.0156	
						GL100-177	



Parts List			
ITEM	QTY	PART NUMBER	DESCRIPTION
1	2	GL100-160-1	BRACKET #1 - 20" SHEAVE GUARD
2	1	GL100-162-1	BRACKET #2 - 20" SHEAVE GUARD
3	1	GL100-164-1	GUARD -20" TRACTION SHEAVE
4	3	3/4 - 10 UNC x 1.0	HEX HEAD CAP SCREW
5	3	3/8-16 UNC x 0.625	WHIZ BOLT
6	3	3/8 UNC	WHIZ NUT
7	3	3/4 WASHER	SAE WASHER
8	3	3/4" WASHER	STANDARD LOCK WASHER

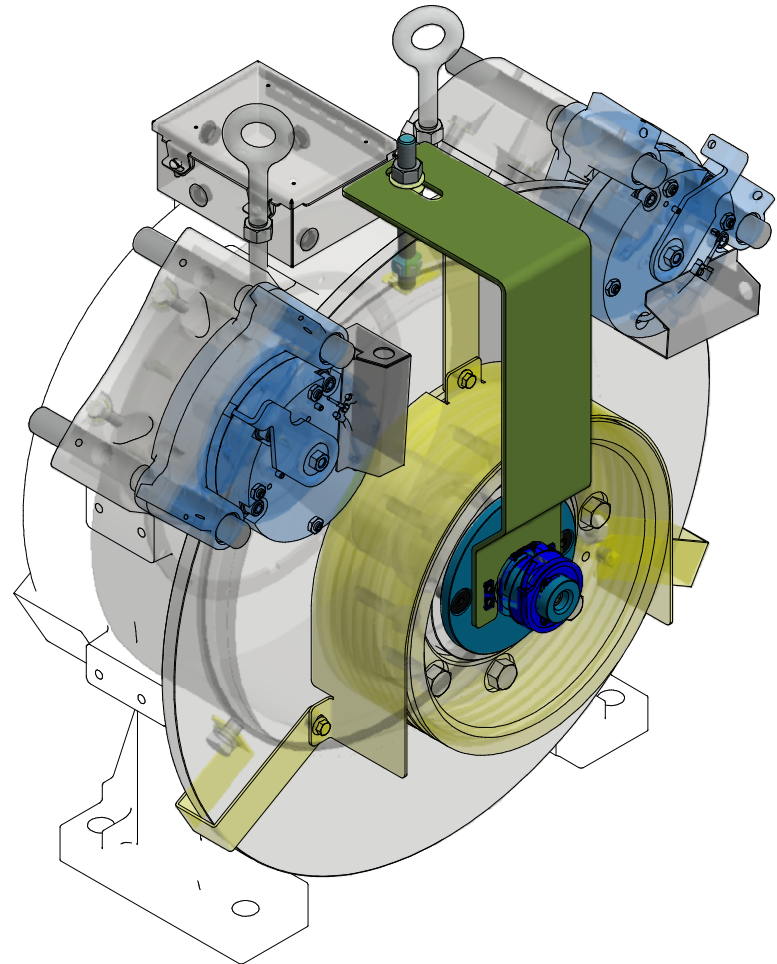
Weight: 11.33 lbmass

										HOLLISTER-WHITNEY ELEVATOR CO. TITLE GEARLESS MACHINE GUARD, WIDE 20" TW	
										DRAWN BY: LTL NA SCALE: C MATERIAL: SEE PARTS LIST DIMENSIONAL TOL. 1 PLACE ±0.01; 2 PLACE ±0.005; 3 & 4 PLACE ±0.001; ANGLES ±0.1° REF., OPEN, (NOMINAL) ± 0.0156	
										A PRODUCTION RELEASE, PUR #484 LTL 4/10/12 SHEET SIZE C DATE 1/6/2009 GL100-177-1	



Parts List			
ITEM	QTY	PART NUMBER	DESCRIPTION
1	1	GL100-018-X	ENCODER EXTENSION
2	1	GL100-018-X1	FRONT ENCODER BRACKET
3	1	GL100-018-X2	ENCODER BRACKET BOLT
4	2	3/4 - 10 UNC	HEX NUT - STANDARD
5	2	3/4" WASHER	WIDE (FENDER) WASHER
6	2	5/8-11 UNC x 1.25	FLAT HEAD CAP SCREW
7	1	1/2 - 13 UNC x 3.25	SOCKET HEAD CAP SCREW
8	4	#8 - 32 UNC x 0.375"	SOCKET HEAD CAP SCREW
9	4	#8 LOCK WASHER	EXT. TOOTH LOCK WASHER

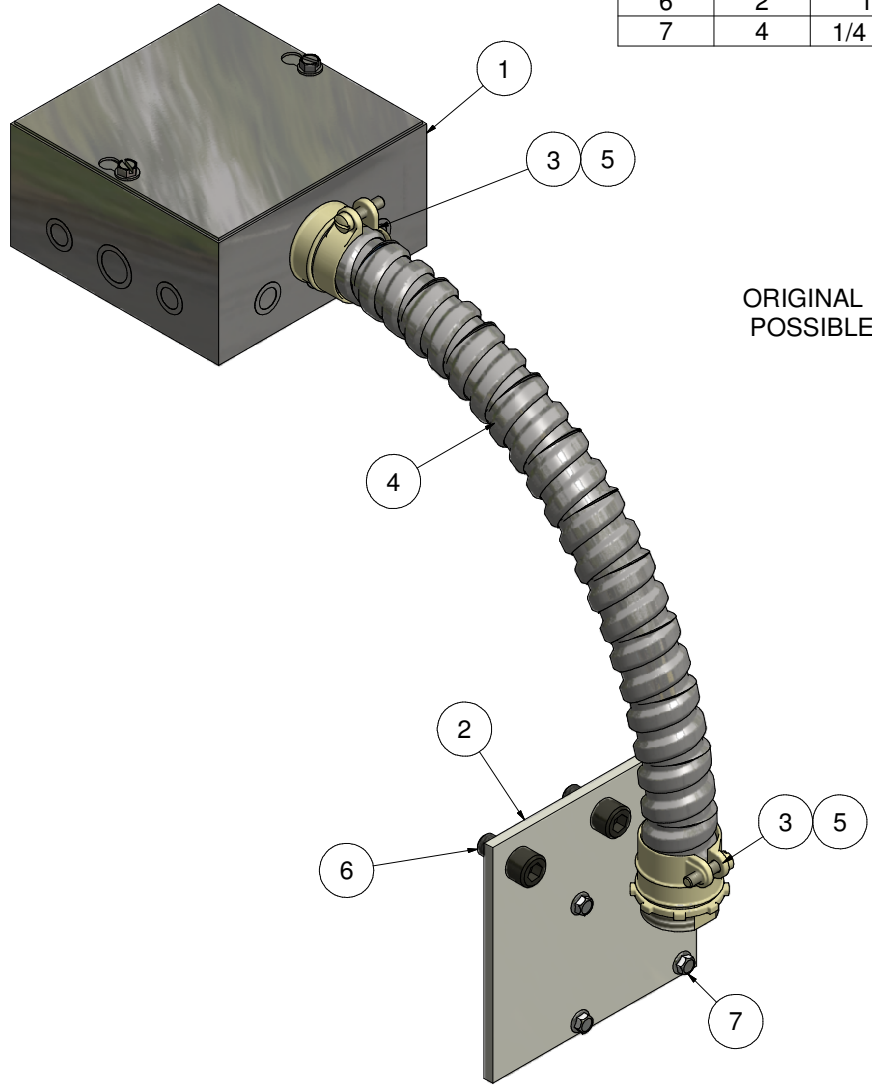
(B)



Weight: 18.52 lbmass

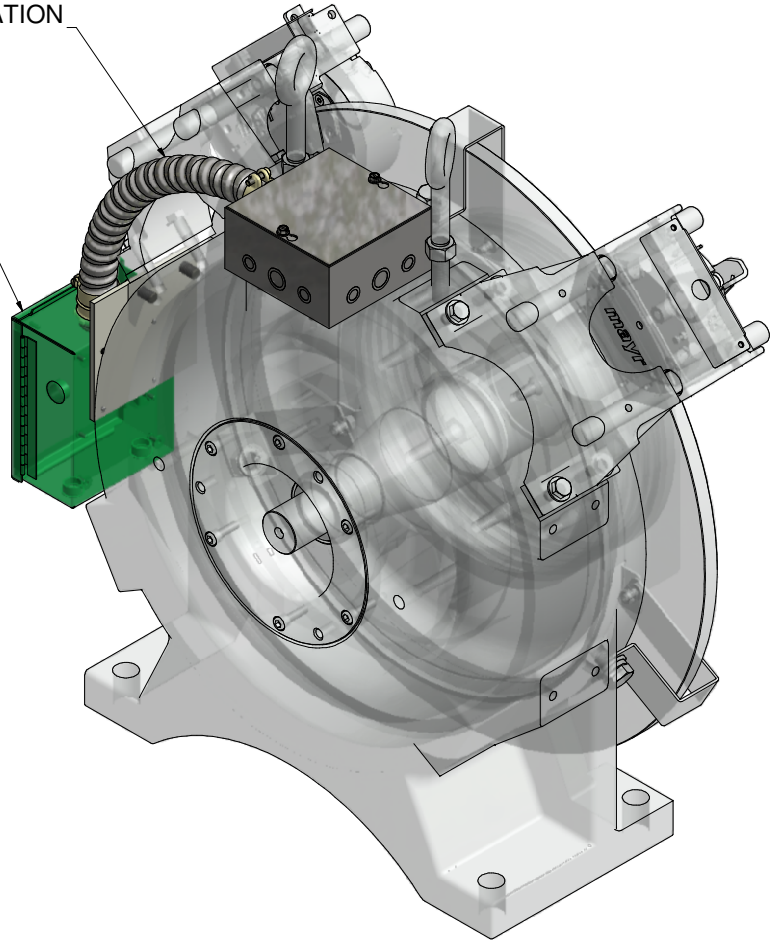
				HOLLISTER-WHITNEY	
				ELEVATOR CO.	
				TITLE FRONT ENCODER RELOCATION BRACKET ASSEMBLY	
		DRAWN BY	SCALE	MATERIAL	DIMENSIONAL TOL.
		LTL	NA	SEE PARTS LIST	1 PLACE ±0.01; 2 PLACE ±0.005; 3 & 4 PLACE ±0.001; ANGLES ±0.1° REF., OPEN, (NOMINAL) ± 0.0156
B	EXTENSION MOD & ADD SHCS, PUR #782	LTL	5/10/16		
A	PRODUCTION RELEASE, PUR #613	LTL	10/1/13	SHEET SIZE	C
				DATE	5/8/2013
					GL100-018-EBA

Parts List			
ITEM	QTY	PART NUMBER	DESCRIPTION
1	1	GL100-159-11	663 SC - COOPER B-LINE BOX - MODIFIED
2	1	GL100-159-12	MOUNTING PLATE
3	2	GL100-159-13	1-1/4 STRAIGHT BOX CONNECTOR (FLEXCON) - REF P/N BRID412DC2
4	1	GL100-159-14	1-1/4 FLEX CONDUIT - 3FT LENGTH - REF. P/N GRF A114
5	2	GL100-159-15	1-1/4 ANTI SHORT BUSHING - REF. P/N THOMAS & BETTS CO. #425
6	2	1/2 - 13UNC x 1"	SOCKET HEAD CAP SCREW
7	4	1/4 - 20 UNC x 0.375"	WHIZ BOLT



POSSIBLE RELOCATION ARRANGEMENT

ORIGINAL ENCLOSURE
POSSIBLE NEW LOCATION

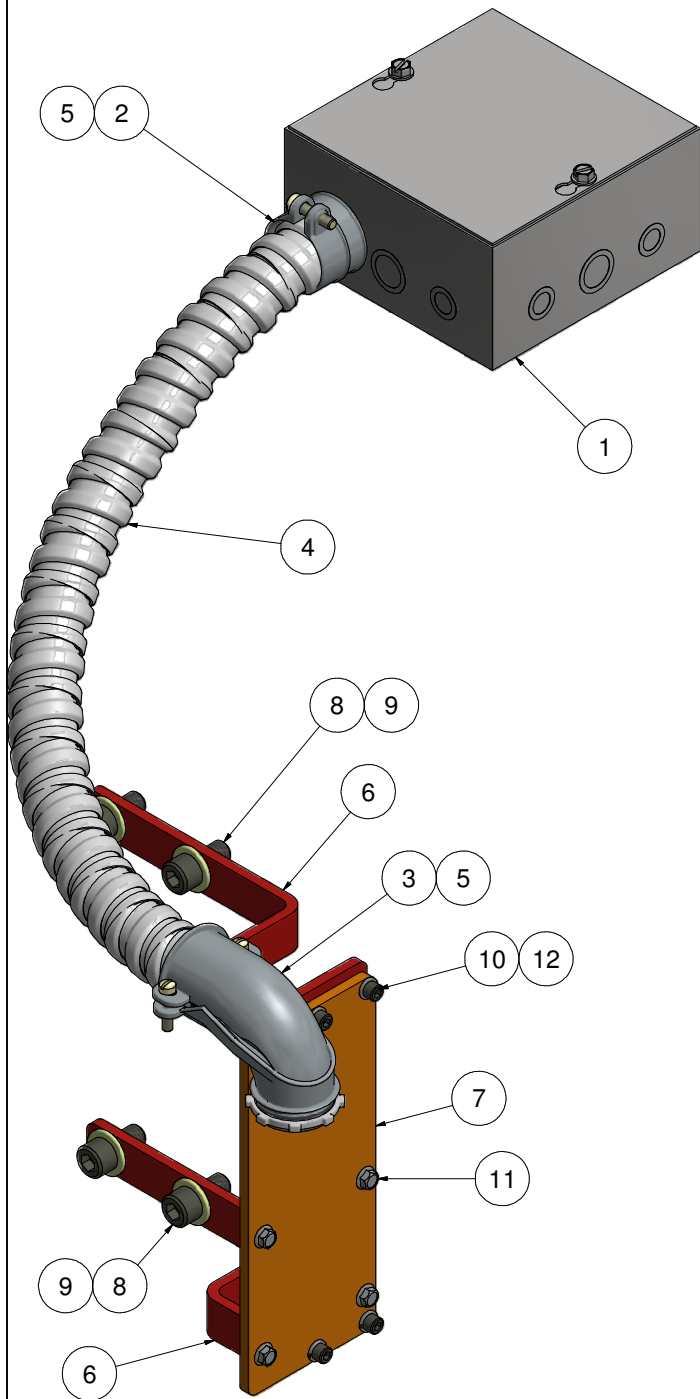


TYPICAL USES; WHEN MOTOR LEADS ARE SHORT AND MUST BE EXTENDED FOR JUNCTION BOX RELOCATION; WHEN RELOCATING JUNCTION BOX DUE TO FIELD SITUATION

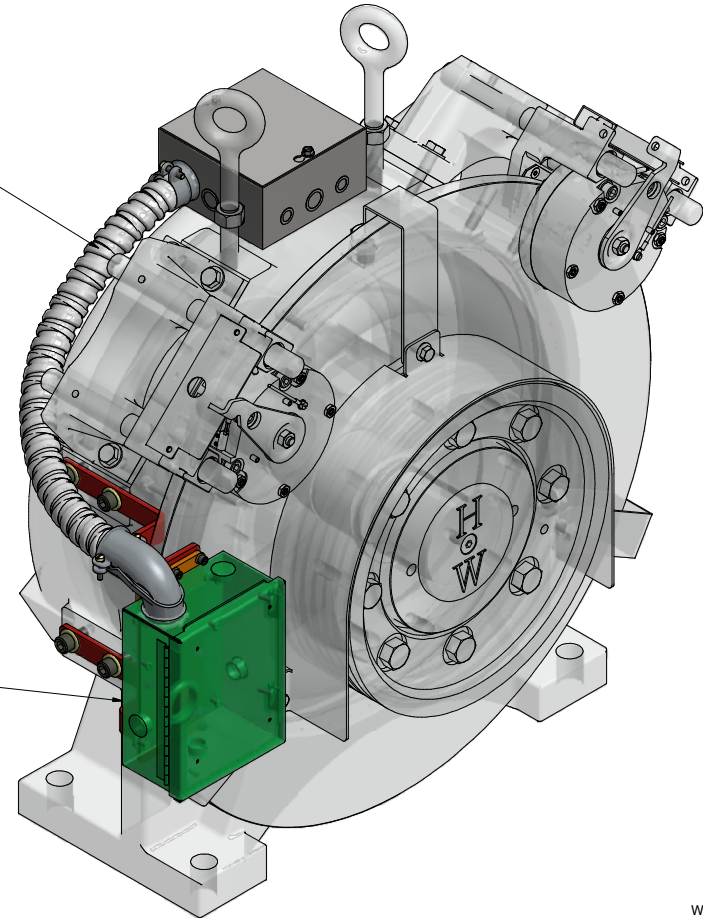
Weight: 11.05 lbmass

				HOLLISTER-WHITNEY							
				ELEVATOR CO.							
				TITLE ELECTRICAL ENCLOSURE RELOCATION KIT - SMALL FRAME ACGL							
				DRAWN BY		SCALE		MATERIAL		DIMENSIONAL TOL.	
				LTL		NA		SEE PARTS LIST		1 PLACE ±0.01; 2 PLACE ±0.005; 3 & 4 PLACE ±0.001; ANGLES ±0.1° REF., OPEN, (NOMINAL) ± 0.0156	
		B UPDATE, PUR #613		LTL 9/13/13		LTL		DATE		12/31/2012	
		A PRODUCTION RELEASE, PUR #555		LTL 1/4/13		SHEET SIZE		C		GL100RK-159	

			Parts List	
ITEM	QTY	PART NUMBER	DESCRIPTION	
1	1	GL100-159-11	663 SC - COOPER B-LINE BOX - MODIFIED	
2	1	GL100-159-13	1-1/4 STRAIGHT BOX CONNECTOR (FLEXCON) - REF P/N BRID412DC2	
3	1	GL100-159-13-1	1-1/4 90° BOX CONNECTOR (FLEXCON)	
4	1	GL100-159-14-1	1-1/4 FLEX CONDUIT - 4 FT - REF P/N GRF A114	
5	2	GL100-159-15	1-1/4 ANTI SHORT BUSHING - REF. P/N THOMAS & BETTS CO. #425	
6	2	GL100-159-16	JUNCTION BOX RELOCATION BRACKET	
7	1	GL100-159-17	MOUNTING PLATE - FRONT	
8	4	1/2 - 13UNC x 1"	SOCKET HEAD CAP SCREW	
9	4	1/2" WASHER	STANDARD WASHER	
10	4	1/4-20 UNC x 0.625	SOCKET HEAD CAP SCREW	
11	4	1/4 - 20 UNC x 0.375"	WHIZ BOLT	
12	4	1/4" LOCK WASHER	STANDARD LOCK WASHER	



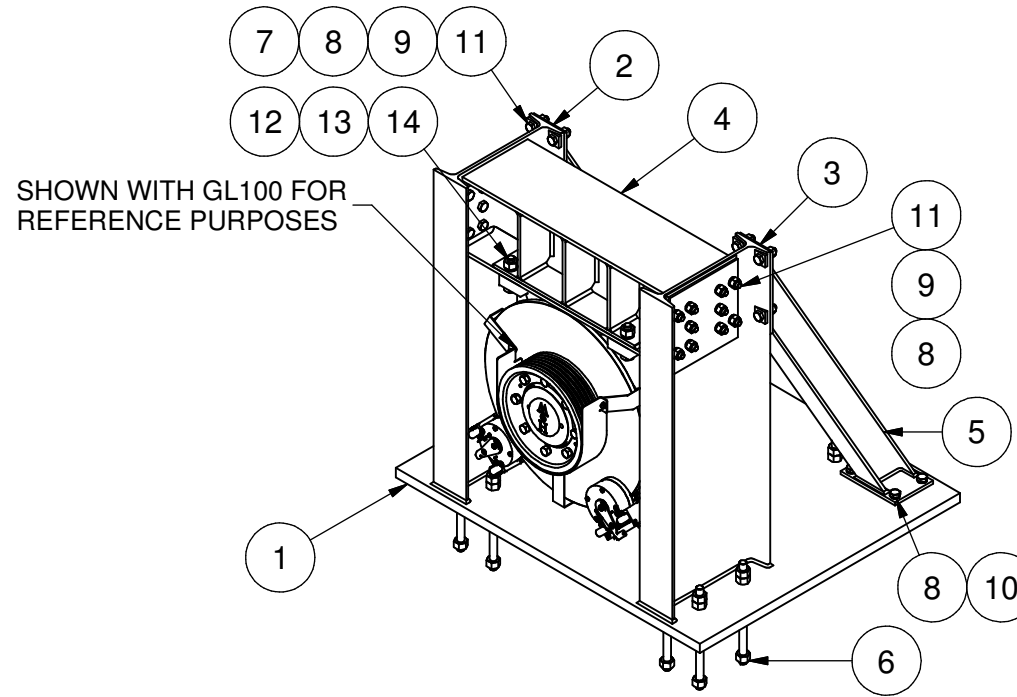
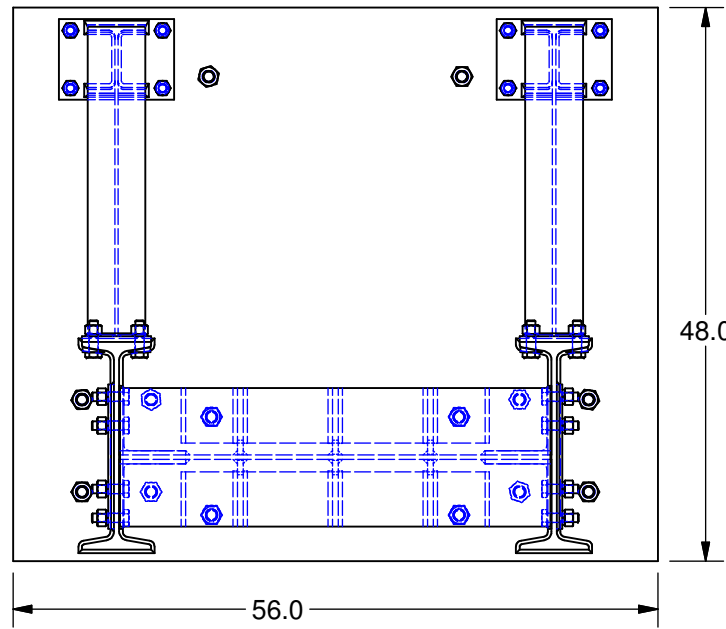
POSSIBLE RELOCATION ARRANGEMENT



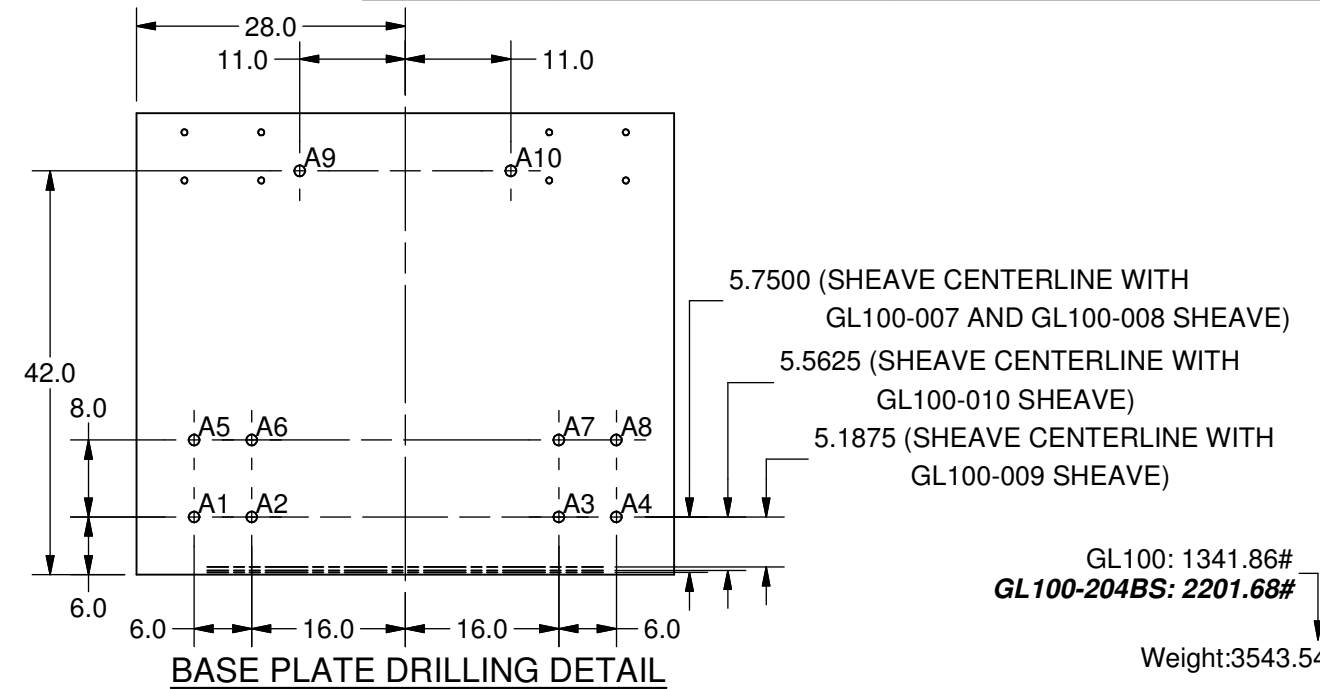
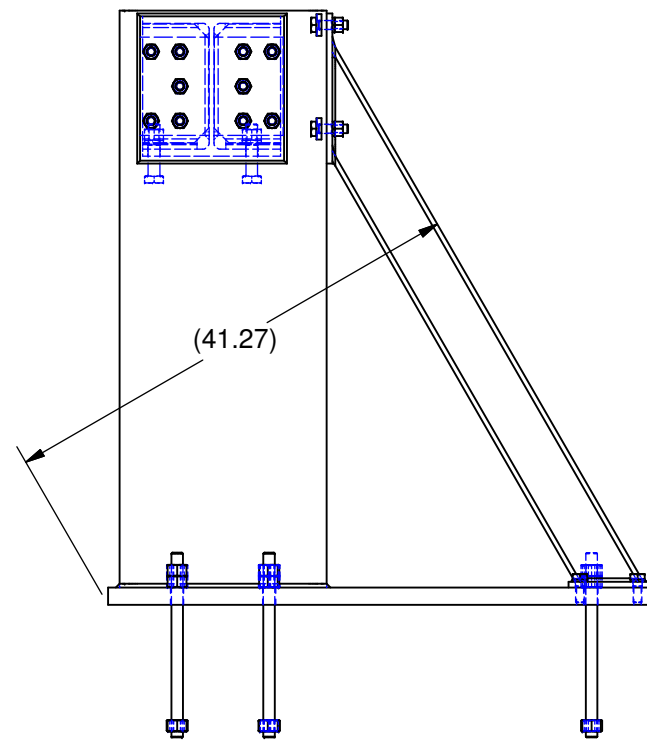
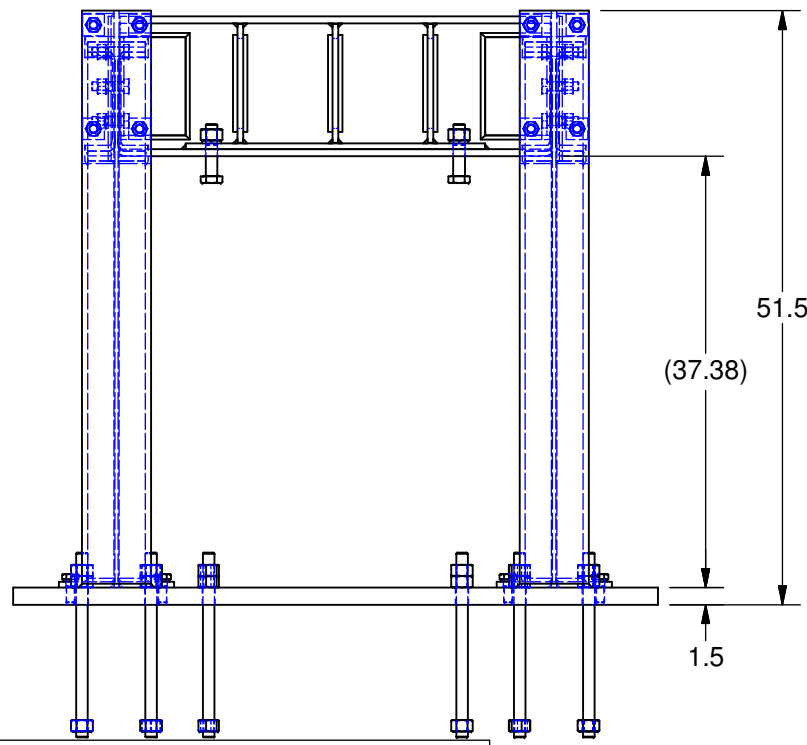
ORIGINAL BOX IN POSSIBLE NEW LOCATION

Weight: 13.24 lbmass

										HOLLISTER-WHITNEY ELEVATOR CO. TITLE JUNCTION BOX RELOCATION KIT - FRONT MOUNT - FIELD	
										DRAWN BY: LTL NA SCALE: C MATERIAL: SEE PARTS LIST DIMENSIONAL TOL. 1 PLACE ±0.01; 2 PLACE ±0.005; 3 & 4 PLACE ±0.001; ANGLES ±0.1° REF., OPEN, (NOMINAL) ± 0.0156	
										A PRODUCTION RELEASE, PUR #636 LTL SHEET SIZE: 3/10/14 DATE: 9/13/2013 GL100RK-159F	



PARTS LIST			
ITEM	QTY	PART NUMBER	DESCRIPTION
1	1	GL100-204BS-001	GL100-204BS BASE PLATE
2	1	GL100-204BS-002-LH	GL100-204BS LEFT HAND COLUMN ASSEMBLY
3	1	GL100-204BS-002-RH	GL100-204BS RIGHT HAND COLUMN ASSEMBLY
4	1	GL100-204BS-003	GL100-204BS Top Beam Assembly
5	2	GL100-204BS-004	GL100-204BS DIAGONAL BRACE
6	10	GL100-204BS-156	GL100-204BS FOUNDATION BOLT ASSEMBLY
7	8	270-054	BEVEL WASHER
8	36	3/4"	Lock Washer
9	28	3/4" - 10 UNC	Heavy Hex Nut
10	8	3/4" - 10 UNC - 2.0"	Heavy Hex Structural Bolt - UNC
11	28	3/4" - 10 UNC - 2.75"	Heavy Hex Structural Bolt - UNC
12	4	1"	Lock Washer
13	4	1" - 8 UNC	Heavy Hex Nut
14	4	1" - 8 UNC - 4.5"	Heavy Hex Structural Bolt - UNC



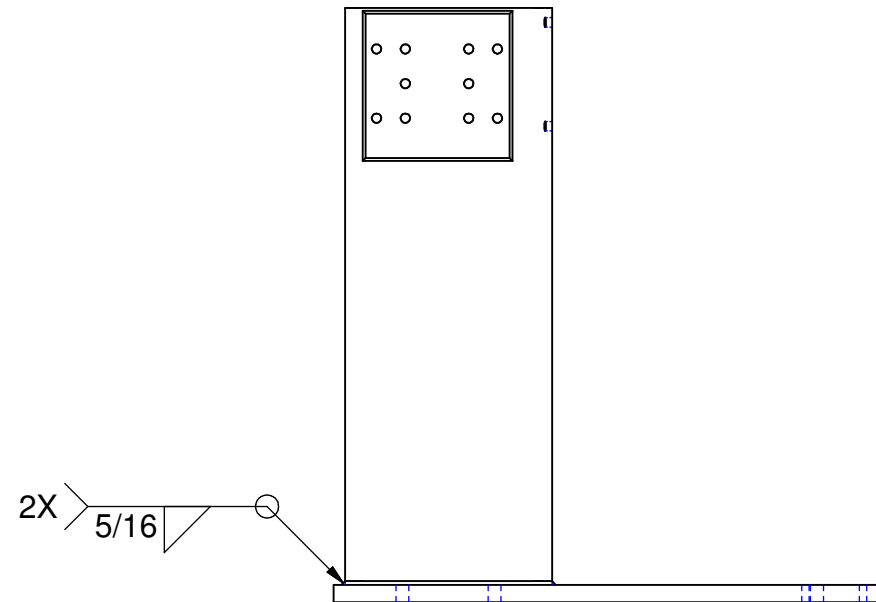
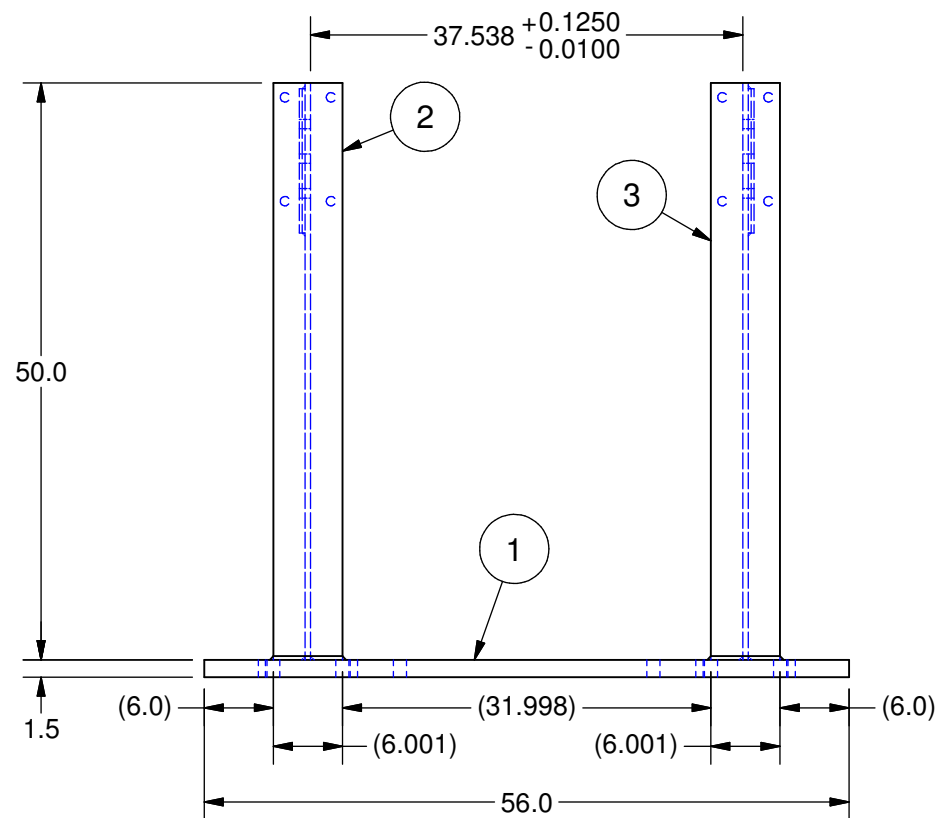
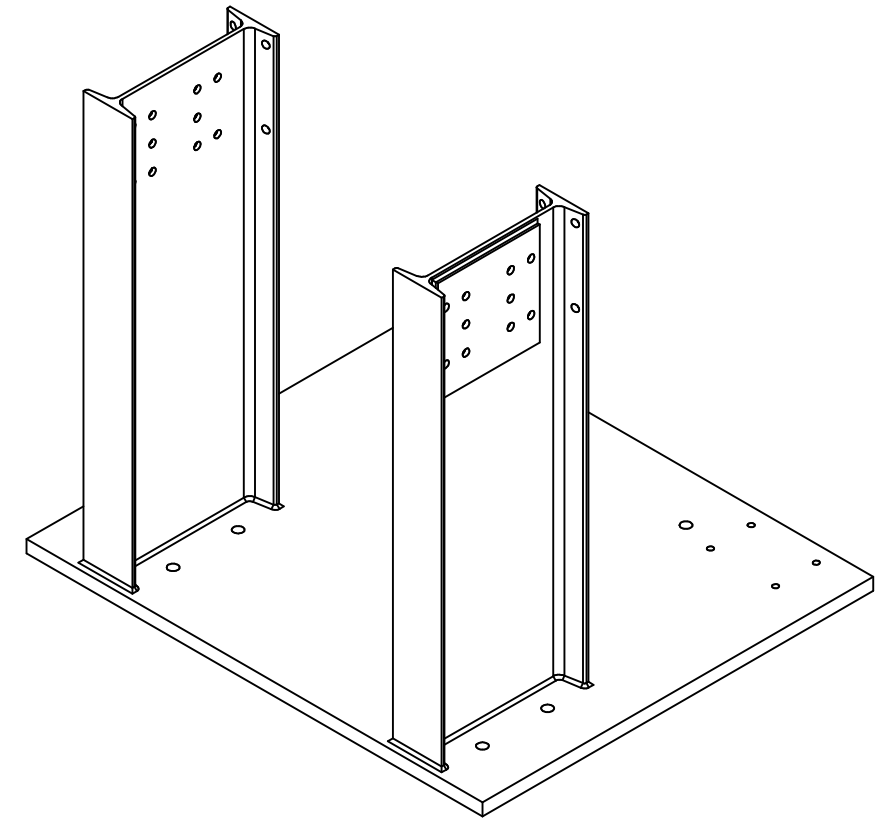
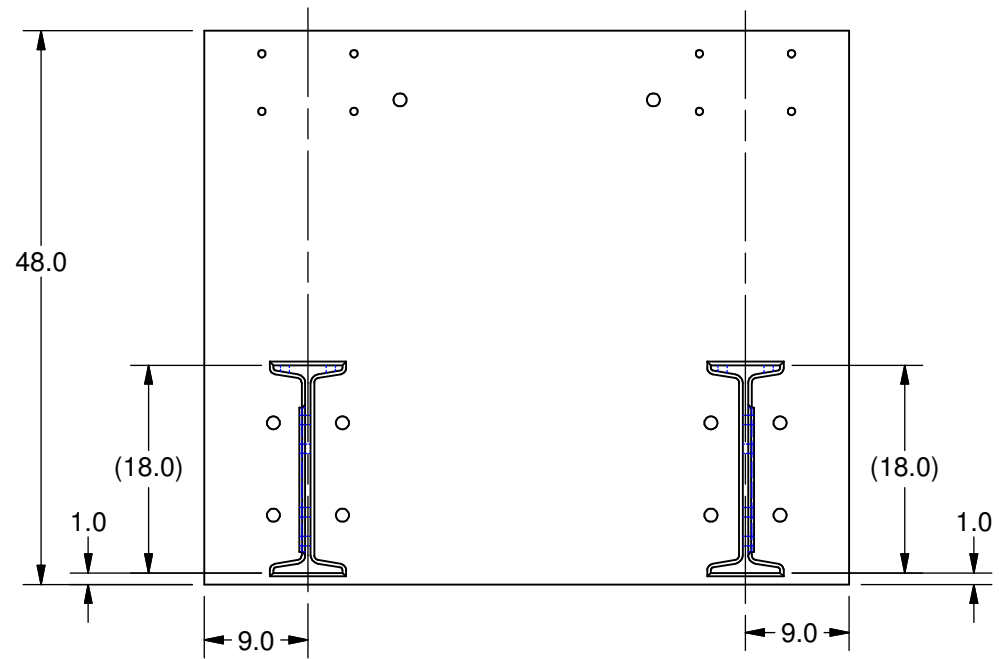
HOLE	UP PULL FORCE (lbs)
A1	5600
A2	5600
A3	5600
A4	5600
A5	2700
A6	2700
A7	2700
A8	2700
A9	100
A10	100

NOTES:
 1. MAX LOAD: 25000#.
 2. THE UP PULL VALUES CORRESPOND TO THE MAX LOAD.
 3. THE FOUNDATION FOR THIS MACHINE STAND SHALL BE DESIGNED BY OTHERS TO WITHSTAND THE LOADS STATED ON THE DRAWING. HOLLISTER-WHITNEY ASSUMES NO RESPONSIBILITY FOR THE DESIGN OF THE FOUNDATION FOR THIS MACHINE STAND.

HOLLISTER-WHITNEY
ELEVATOR CO.

GL100-204BS MACHINE STAND

DRAWN BY	SCALE	MATERIAL	DIMENSIONAL TOL.
BDM	0.06:1	Varies	1 PLACE ± 0.01 2 PLACE ± 0.005 3 & 4 PLACE ± 0.001 ANGLES ± 0.1° REF., OPEN, (NOMINAL), ± 0.0156
SHEET SIZE	B	DATE	GL100-204BS SHEET 1 OF 2
		3/3/2014	



Weight:3543.54 lbmass

**HOLLISTER-WHITNEY
ELEVATOR CO.**

TITLE
GL100-204BS MACHINE STAND

DRAWN BY
BDM

SCALE
0.06:1

MATERIAL

VARIES

DIMENSIONAL TOL.
1 PLACE ± 0.01 2 PLACE ± 0.005
3 & 4 PLACE ± 0.001 ANGLES ± 0.1°
REF., OPEN, (NOMINAL), ± 0.0156

SHEET
SIZE

B

DATE

3/3/2014

GL100-204BS
SHEET 2 OF 2

